

OM SYSTEM

OM Dictation Management System R8

Standalone Installation Guide

OM SYSTEM

ODMS R8

OM Dictation Management System
Module Release 8



Contents

■ Trademarks and Copyrights	4
1 INTRODUCTION.....	5
1.1 System Requirements	6
1.2 Types of Applications.....	8
2 STANDALONE SYSTEM CONFIGURATION.....	9
3 INSTALLING FROM ODMS R8 STANDALONE LAUNCHER	11
3.1 Launcher Configuration	12
3.1.1 Client Package.....	12
3.1.2 Other tools	13
4 INSTALLING DICTATION MODULE/TRANSCRIPTION MODULE.....	14
4.1 New Installation	15
4.2 Upgrading Installation	16
4.3 Updating Installation.....	18
4.3.1 Auto Update from the OM Digital Solutions Update Server	18
4.4 Adding an Application.....	19
4.5 Preparation before Installation.....	22
4.5.1 Obtaining volume license key (ODMSR8STD.DAT file)	22
4.5.2 Creating CustomConfig.xml (Optional)	22
4.6 Installing from Setup Wizard	24
4.7 Using a virtual environment	28
5 DISTRIBUTING SOFTWARE.....	29
5.1 Preparing an Installation Package for Distribution.....	30
5.1.1 Preparing .NET Framework 4.8	30
5.1.2 Preparing an Installation Package	30
5.2 Preparing a Script File for Distribution	32
5.3 Automatic Distribution by Group Policy	34
5.3.1 Registering the Organization to which Applications Are Distributed	34
5.3.2 Registering Group Policy	36
5.3.3 Automatic Distribution of Software by Startup Script	38
5.4 Installation by Batch File	40
6 INSTALLING DEVICE CUSTOMIZATION PROGRAM.....	41

7 INSTALLING ODMS DOWNLOADER TOOL FOR DPM	45
8 REFERENCE INFORMATION	49
8.1 How to Use Installation Options	49
8.1.1 ODMSClient.msi Installation Options	49
9 TROUBLESHOOTING	51
9.1 Cannot Install	51
9.2 Starting Dictation Module or Transcription Module Not Allowed.	51
10 SUPPORT CONTACTS	52

■ Trademarks and Copyrights

- Microsoft, Windows, Windows Media, Windows Media Player, Windows Server, Outlook, DirectX, Active Directory, and DirectShow are trademarks or registered trademarks of Microsoft Corporation in the United States and/or other countries.
- Citrix, ICA (Independent Computing Architecture), MetaFrame, and Program Neighborhood are trademarks or registered trademarks of Citrix Systems, Inc. in the United States and/or other countries.
- Nuance, the Nuance logo, Dragon, Dragon NaturallySpeaking, and RealSpeak are trademarks and/or registered trademarks of Nuance Communications Inc., and/or its affiliates in the United States and/or other countries.
- SocketTools is a trademark or registered trademark of Catalyst Development Corporation.
- Gmail is a trademark or registered trademark of Google Inc.
- Yahoo!, Yahoo! logo, and Yahoo! Mail are trademarks or registered trademarks of Yahoo! Inc.
- Other company and product names mentioned in this document are trademarks or registered trademarks of their respective owners.

1 Introduction

OM Dictation Management System R8 (ODMS R8) is a software product optimized to manage the workflow from dictation to document. It can be used to import audio data highly compressed with an OM Digital Solutions digital voice recorder (hereinafter referred to as "the recorder") to a PC.

ODMS R8 offers the following:

- Download a dictation file to a shared folder automatically when you connect the recorder to the PC so that it can be assigned to a transcriptionist.
- A dictation file can be assigned to a transcriptionist by directly recording to a PC using RecMic.
- A downloaded file can be assigned to a transcriptionist via e-mail or FTP.
- Efficient transcription is facilitated by use in combination with speech recognition software.
(Background speech recognition and real-time speech recognition)
- The recognition rate of documents for which speech recognition has been performed can be further improved by adaptation.
- Transcription documents can be shared in a folder or sent via e-mail or FTP, and are linked automatically with the original dictation files.
- The status of a transcription can be determined at a glance.
- Transcription can be performed while listening to the dictation file in the Playback Control window.
- Security and other advanced settings can be configured in addition to the items that can be configured on the device.



1.1 System Requirements

The following table lists the operating conditions.

ODMS R8 Standalone System

Item	Condition
OS	- Windows 10 / 11
CPU	2 GHz or higher *Not supported single core processor
Memory	2 GB or more (Windows 10) 4 GB or more (Windows 11)
HDD Space	2 GB or more (Additional space is required in case .NET Framework 4.8 is not installed yet.)
Network	100 Mbit/s or faster transfer rate, TCP/IP network protocol
.NET Framework	.NET Framework 4.8 or later
Display	1024 x 768-pixel resolution or higher 65,536 colors or more (16.77 million colors or more recommended)
Graphics	DirectX 9 compliant graphics device with WDDM 1.0 or higher driver
USB	With the Dictation Module and Transcription Module: One or more USB ports available
Sound	With the Dictation Module and Transcription Module: A Microsoft WDM- or MME-compliant and Windows-compatible sound device
Microsoft Office	- Office 2013 / 2016 / 2019 / 2021 - Office 365
Web mail	- Outlook.com - Google Mail - Yahoo! Mail
Speech Recognition (Dragon®)	<ul style="list-style-type: none"> - Dragon Professional Individual/Group, v14 - Dragon Legal Individual/Group, v14 - Dragon Professional Individual/Group, v15 - Dragon Legal Individual/Group, v15 - Dragon Professional/Legal, v16 <div>NOTE:</div> <ul style="list-style-type: none"> - ODMS R8 does not formally support any other versions/editions than listed above. - ODMS R8 supports all languages supported by Dragon speech recognition software. To match Dragon's language and Windows language setting is required. - Speech Recognition supported when ODMS R8 is being used in each virtual environment. Regarding the requirements for virtual environment is follows each Dragon virtual environment guide line.
Virtual Environments (ODMS software running on server OS)	<p>Virtualization Software: (Supported on the server operating system)</p> <ul style="list-style-type: none"> - Remote Desktop Service (Windows Terminal Service), Remote App - Citrix XenApp 7 – 7.2208 - Citrix XenDesktop 7 – 7.2208 - VMware Horizon 7 – 8.2206 - Azure Virtual Desktop <p>Virtual Desktop Operating System:</p> <ul style="list-style-type: none"> - Windows 10 / 11 - Windows Server 2016 / 2019 / 2022 <p>Client Operating System:</p> <ul style="list-style-type: none"> - Windows 10 / 11 <div>NOTE:</div> <ul style="list-style-type: none"> - Using Citrix virtual environments requires a separate Citrix user license. - Using Remote Desktop Service or Remote App requires a separate RDS CAL license.

	<ul style="list-style-type: none"> - Remote connections via Microsoft Store apps are not supported. - Using VMware View requires a separate VMware View user license.
Supported Languages	English, French, German, Spanish, Russian, Swedish, Czech

	Installing ODMS requires Administrator privileges.
	Various types of information, including product specifications, PC connections, support for operating systems, and FAQs is available on our Web site. For the latest information, access the OM Digital Solutions website in your respective region.

1.2 Types of Applications

This section provides an overview of the applications of ODMS R8 Standalone Launcher.

- **Dictation Module**

Dictation Module is software that enables an author to easily download and manage dictation files. It also supports direct recording using an OM Digital Solutions USB microphone such as RecMic. In addition, hands-free recording is also possible using a 4-pedal foot switch such as the RS31N. Configuring the automatic settings of the workflow enables Dictation Module to automatically download and automatically transfer (via a designated LAN network, e-mail, or FTP) after the recorder is connected to a PC so you can share your dictation files with a transcriptionist or perform transcription automatically using the speech recognition functions linked with Dictation Module.

- **Transcription Module**

Transcription Module is software that allows you to playback dictation files with your hands free by using a USB foot switch such as the RS31N.

It can streamline transcription by, for example, automatically specifying a document template and starting your word processor when transcription starts. In addition, it can reduce the workload and improve the productivity of a transcriptionist by using the speech recognition functions to automatically create a document and synchronize with the voice to make corrections.

Furthermore, playback control, user interface, foot switch customize function, and other settings required for transcription can be accessed easily.

- **Device Customization Program**

This is a tool to manage device settings in a template, and supports the customization of device settings and the importing/exporting of settings. It allows you to connect devices by USB and then configure the same settings on multiple devices.

Furthermore, the device settings of individual users can be managed by using the import/export functions.

- **ODMS Downloader Tool for DPM**

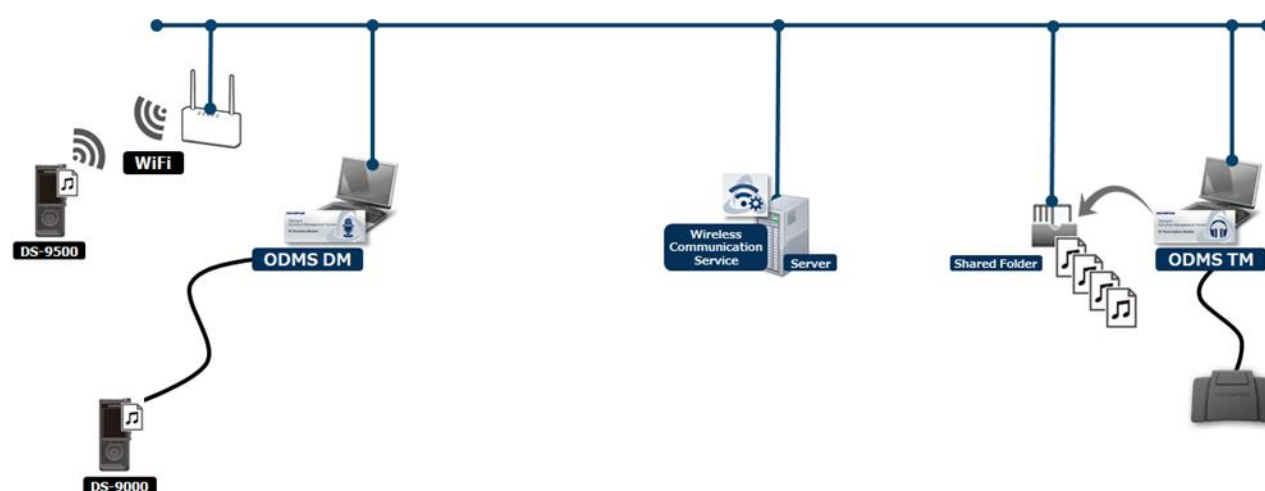
This is a resident software to download audio files recorded by DPM series to ODMS R8.

The software starts up automatically when the PC is started, and when it detects a connection to a DVR, it automatically downloads the files and stores them in a specified location.

2 Standalone System Configuration

This system configuration provides a dictation-to-transcription workflow suitable for relatively small number of users. It allows flexible configuration by customizing the settings for each user, and also facilitates the sharing of dictations using a shared folder. Furthermore, it supports the wireless transfer of dictations via the DS-9500.

For single user installation, the individual user license key is used to install the application on the PC. All the application configuration and user settings will be contained in this configuration to the local PC and managed by the individual user. The installation is typically done interactively using the ODMS R8 Installer.



For multi user installation, single license keys or volume license key can be used in this configuration where the license is assigned to the individual application and licensing is enforced when the application startup via broadcast to verify licensing.

Multi user installation can be performed interactively using the ODMS R8 Installer or deployed silently using the ODMS DM/TM Installation Package (MSI) via Active Directory, Logon Script, or third party deployment software.



Silent installation requires a volume license key

Volume license key can be obtained as an exchange for single licenses free of charge. Please contact your dealer or distributor for information about volume license key exchange procedure.

Furthermore, Device Customization Program can be used to configure the same settings on multiple devices by saving the items configured on one device as a template in advance and then connecting other devices and writing the saved settings. The administrator can lock each item to prevent it being changed by the user.

Required License

Single license is the license key bundled with the recorder or with the transcription kit. License included with recorder is known as dictation license while license included with transcription kit is known as transcription license.

ODMS R8 DM Single License for Standalone

ODMS R8 TM Single License for Standalone

Volume license is also known as bulk license or site license. Volume licenses are provided as exchange for single licenses. A volume license key can be for dictation or transcription and not a combination of both.

ODMS R8 DM Volume License for Standalone

ODMS R8 TM Volume License for Standalone

Modules to Be Installed

Dictation Module

Transcription Module

Device Customization Program (Optional)

3 Installing from ODMS R8 Standalone Launcher

This chapter explains the procedure to build an ODMS R8 standalone system using ODMS R8 Standalone Launcher.

ODMS Standalone Launcher is used when you build a workflow which includes an administrator and/or multiple dictation/transcription users.

3.1 Launcher Configuration

The configuration of the standalone system must be determined in advance because the software to install differs depending on the structure of a workflow. Install the appropriate software in consideration of the following use cases.

Use Case	Software to Install
Transfer dictations via a wireless network.	ODMS R8 MSI Package (Dictation Module)
Use the speech recognition function.	ODMS R8 MSI Package (Dictation Module / Transcription Module)
Download dictation files easily.	ODMS Downloader Tool for DPM (ODTD)_
Configure the settings of multiple recorders all at once.	Device Customization Program (DCP)

The following explains the configuration of the packages of ODMS R8 Standalone Launcher.

3.1.1 Client Package

ODMS R8 MSI Package

This is an MSI package for distributing ODMS R8 Dictation Module/Transcription Module.

Deploy the MSI packages and volume license files (ODMSR8STD.DAT) as a package for distributing. In addition, if you wish to customize the Dictation Module/Transcription Module settings in advance and then install the software, you can install the software in a customized state by creating CustomConfig.xml and including it in the package to be distributed.

Furthermore, under an Active Directory environment, packages can also be distributed when the PC of each user starts up by distributing software by Group Policy and registering a batch file in a startup script to perform a silent installation.

For details on installing Dictation Module/Transcription Module, refer to "[4 Installing Dictation Module/Transcription Module](#)".

Citrix Client Virtual Driver MSI Package

Folder for storing the Client Virtual Driver used by Citrix XenApp.

When using the Dictation Module/Transcription Module as an open application under a Citrix XenApp, this driver must be deployed on the client PCs.

Terminal Service Client Driver Package

Folder that contains the Client Virtual Driver for the use of a terminal service.

When using the Dictation Module/Transcription Module in a Windows server terminal services environment, this driver must be deployed on the client PCs.

3.1.2 Other tools

Device Customization Program (DCP)

This is software to configure device settings all at once for administrators that allows recorder settings to be managed as a template, and the settings of a connected device to be configured according to the template.

Click to start the installer then follow the wizard to install the software.

For details, refer to "[6 Installing Device Customization](#) Program".

ODMS Downloader Tool for DPM (ODTD)

This is a resident software to download audio files recorded by DPM series to ODMS R8.

Click to open the installer folder, launch Setup.exe and follow the wizard to install.

For details, refer to "[7 Installing ODMS Downloader Tool for DPM](#)".

4 Installing Dictation Module/Transcription Module

This chapter explains the installation preparation and procedure for Dictation Module/Transcription Module of ODMS R8. Before installing Dictation Module/Transcription Module, you need to prepare the necessary licenses, configuration files, and packages.

If the Active Directory domain environment has been built, you can automatically distribute the software by using the software distribution mechanism of Group Policy and registering a startup script to the domain. If there is no Active Directory domain environment, the software can be installed by storing the installer in a shared folder, making the designated batch file available to each user, and having each user execute it. Perform the following procedure to prepare the files.

- In the case of a new installation of the software, refer to the following section.
 - ☐ [New Installation](#)

- When existing software is already installed and you wish to apply ODMS R8, which is the latest version, refer to the following sections.
 - ☐ [Upgrading Installation](#)
 - ☐ [Updating Installation](#)

- If either Dictation Module or Transcription Module of ODMS R8 has already been installed, and you wish to install the other software, refer to the following.
 - ☐ [Adding an Application](#)

4.1 New Installation

This section explains how to newly install Dictation Module/Transcription Module for multiple users. The installation procedure differs depending on whether or not the Active Directory domain environment has been built so select the installation procedure according to the distribution environment.

When installing on each Client PC , refer to "[4.6 Installing from Setup Wizard](#)".

When installing on a virtual environment, refer to "[4.6 Installing from Setup Wizard](#)".

Use the following procedure to install Dictation Module/Transcription Module.

■ Procedure

- 1.** The volume license and configuration files need to be prepared before the installation.
Refer to [4.5 Preparation before Installation](#) and then obtain the necessary files.
- 2.** Prepare .NET Framework 4.8 and the package to be installed.
Refer to [5.1 Preparing an Installation Package for Distribution](#) and then place the necessary files in the shared folder.
- 3.** Create the script file for distributing the software.
Refer to [5.2 Preparing a Script File for Distribution](#) and then create the batch file for installation execution during distribution.
- 4.** Once preparation of the necessary files is complete, configure the software distribution settings.
Refer to [5.3 Automatic Distribution by Group Policy](#) in the case of the Active Directory domain environment and refer to [5.4 Installation by Batch File](#) when a domain environment has not been built, and then perform the installation.



When setting up each of Dictation Module and Transcription Module on a separate PC, you need to distribute each installation package including the corresponding license key.

4.2 Upgrading Installation

This section explains how to upgrade Dictation Module/Transcription Module of ODMS R7 already installed on a PC to the new version of Dictation Module/Transcription Module of OM Dictation Management System R8 (ODMS R8).

When the previous ODMS R7 version is installed, the previous setting state can be inherited when ODMS R8 is installed. Functions that are newly added in R8 will be installed in the default state.

■ Overview

- System Configuration after Upgrade

When upgrading, the ODMS R8 Dictation Module/Transcription Module are installed with the same installation settings as R7.

- Restrictions on Changing System Configuration

The system configuration cannot be changed when upgrading.

For example, to upgrade R7 installed as a workgroup system to an ODMS R8 standalone system installed, first uninstall R7 and then perform a new install for ODMS R8.

- License key

An upgrade license key for ODMS R8 is required when upgrading.

The applications that are installed are in accordance with the ODMS R8 license type that is specified when installing.

For example, when the upgrade is performed using a license key for ODMS R8 Transcription Module on a PC with ODMS R7 Dictation Module installed, only Transcription Module of ODMS R8 is installed. The R7 Dictation Module will be uninstalled at this time.

Use the following procedure to perform the upgrade.

■ Procedure

1. Prepare the volume license for the upgrade before the installation.

Refer to "[4.5.1 Obtaining volume license key \(ODMSR8STD.DAT file\)](#)" and then obtain the necessary files.

2. Prepare .NET Framework 4.8 and the applicable installer.

Refer to [5.1](#) and then place the necessary files in the shared folder.

3. Create the script file for distributing the software.

Refer to [5.2 Preparing a Script File for Distribution](#) and then create the batch file for installation execution during distribution.

4. Once preparation of the necessary files is complete, configure the software distribution settings.

Refer to [5.3 Automatic Distribution by Group Policy](#) in the case of the Active Directory domain environment and refer to [5.4 Installation by Batch File](#) when a domain

environment has not been built, and then perform the installation.

4.3 Updating Installation

This section explains how to update Dictation Module/Transcription Module that is already installed when ODMS R8 MSI Package for the latest version has been obtained. When an update is performed, the license key and .NET Framework 4.8 are already installed so set only the installer of the target application to be distributed.

1. Prepare .NET Framework 4.8 and the applicable installer.

Refer to [5.1](#) and then place the necessary files in the shared folder.

2. Create the script file for distributing the software.

Refer to [5.2 Preparing a Script File for Distribution](#) and then create the batch file for installation execution during distribution.

3. Once preparation of the necessary files is complete, configure the software distribution settings.

Refer to [5.3 Automatic Distribution by Group Policy](#) in the case of the Active Directory domain environment and refer to [5.4 Installation by Batch File](#) when a domain environment has not been built, and then perform the installation.

4.3.1 Auto Update from the OM Digital Solutions Update Server

ODMS R8 Dictation Module/Transcription Module update programs are published on the OM Digital Solutions update server. If the environment is connected to the Internet, Dictation Module/Transcription Module will periodically check the OM Digital Solutions update server once a day, and whenever a newly published update program is available, automatically acquire it and notify the user that an update program is available. If you agree to downloading, the resident Download Manager downloads the update program.

The update execution confirmation dialog box appears after the next startup, and the update starts if you agree to the update.

4.4 Adding an Application

In cases where either the ODMS R8 Dictation Module or Transcription Module has already been installed, you can install the other one using the maintenance mode.



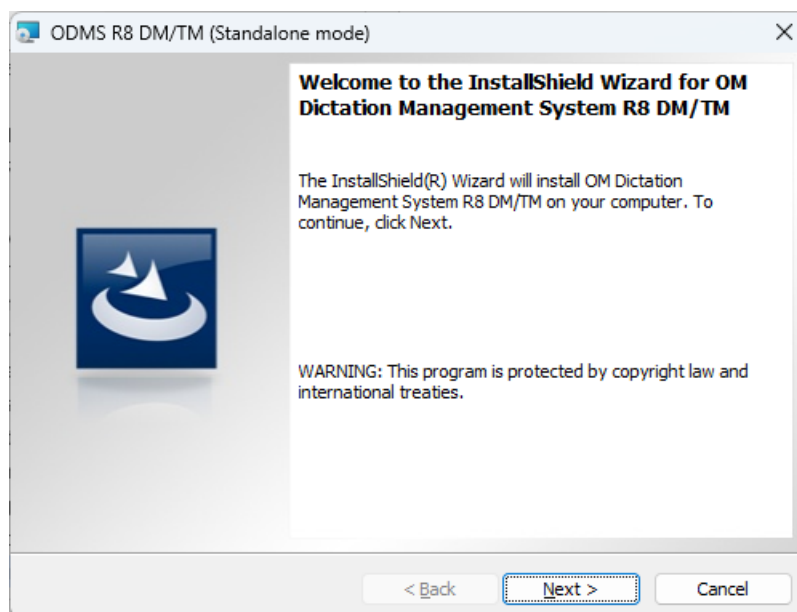
The module license keys are needed to add a module to a stand-alone system or workgroup system environment.

For the license key purchase method, refer to "4.5.1 Obtaining volume license key (ODMSR8STD.DAT file)".

Use the following procedure to install:

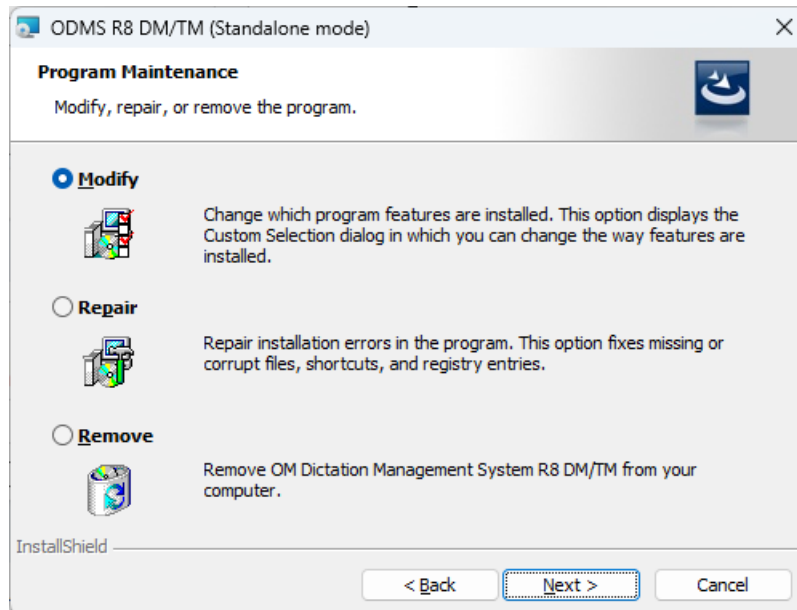
■ Procedure

1. Select [Settings] - [Apps & features] from the [Start] menu of Windows.
2. Select "OM Dictation Management System R8 DM/TM", and then click [Modify].
3. This starts up the ODMS R8 installer in its maintenance mode.



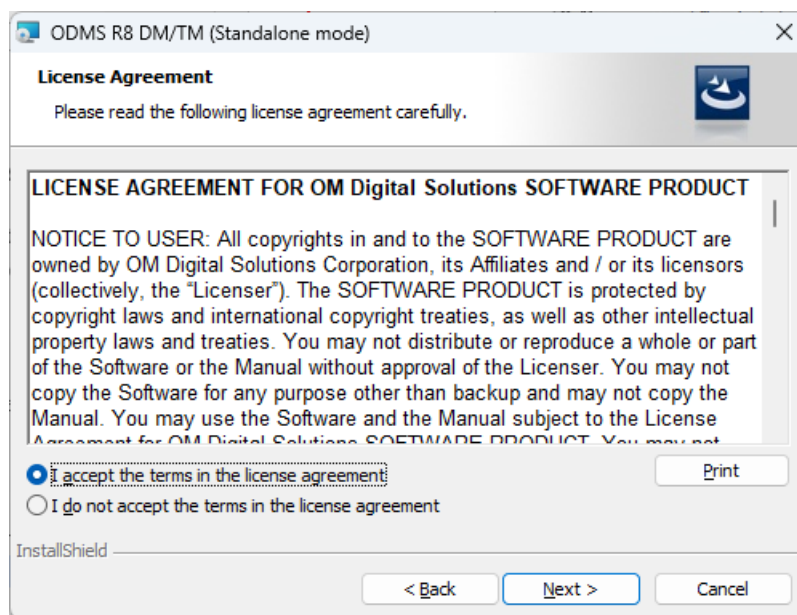
4. Click [Next].

→ The [Program Maintenance] screen will appear.



5. Select [Modify], and then click [Next].

→ The [License Agreement] screen will appear.



6. Accept the license agreement, and then click [Next].

→ The Customer Information dialog box will appear.

The screenshot shows a Windows-style dialog box titled "ODMS R8 DM/TM (Standalone mode)". The dialog has a header bar with a blue icon on the left and a close button (X) on the right. Below the header, the title "Customer Information" is displayed in bold, followed by the instruction "Please enter your information." and a blue circular logo with a white stylized 'S'.

The main area of the dialog contains three input fields:

- User Name:** A text box containing the text "pc-user".
- Organization:** An empty text box.
- License ID:** A series of five small text boxes separated by hyphens, all of which are empty.

At the bottom left of the dialog, the text "InstallShield" is visible. At the bottom right, there are three buttons: "< Back", "Next >" (which is highlighted with a blue border), and "Cancel".

The remainder of this procedure is the same as that for the new installation procedure. Follow the wizard to enter the license key of the application being added and to install it. For details, refer to ["4.6 Installing from Setup Wizard"](#).

4.5 Preparation before Installation

This section describes how to obtain the necessary license file (ODMSR8STD.DAT) and create CustomConfig.xml for customizing the software settings before installing ODMS R8 Dictation Module/Transcription.

When the administrator distributes the software to multiple users, these files need to be included in the distribution package and the installer needs to be executed. CustomConfig.xml is required when customizing the software settings. The existing settings will be inherited when upgrading and updating.

☐ [Obtaining volume license key \(ODMSR8STD.DAT file\)](#)

☐ [Creating CustomConfig.xml \(Optional\)](#)

4.5.1 Obtaining volume license key (ODMSR8STD.DAT file)

When ODMS R8 Dictation Module/Transcription Module will be used by multiple users, a volume license key (ODMSR8STD.DAT) is required.

ODMSR8STD.DAT is a license file that includes the volume license key required to silently install the OM Dictation Management System software. To obtain a license file, please contact your dealer or distributor when requesting a standalone volume license for your system.



Silent installation requires a volume license key

Volume license key can be obtained as an exchange for single licenses free of charge. Please contact your dealer or distributor for information about volume license key exchange procedure.

See “10 Support Contacts” for information on how to obtain volume license key.

4.5.2 Creating CustomConfig.xml (Optional)

CustomConfig.xml is a preset configuration file used to customize application settings on initial startup after installation. When this file is installed along with Dictation Module and/or Transcription Module, the CustomConfig.xml settings will be copied to the application user or PC Name xml profile settings.

How to create a CustomConfig.xml profile is described below.

■ Procedure

1. Install Dictation Module or Transcription Module on one PC and then start it and pre-configure the option settings.



- To install Dictation Module/Transcription Module on one PC, open [Client Package->ODMS R8 MSI Package](#) of Launcher and execute Setup.exe.
For the installation procedure, refer to "4.6 Installing from Setup Wizard".
- For details on the option settings, refer to Help of Dictation Module or Transcription Module.

2. When the settings are complete, copy the user profile XML file saved in the following location to the desktop.

Type	Save Location of User Profile XML
When installed with individual user settings	%AppData%\Olympus\ODMS_R8\DMTM\{User ID}.xml
When installed with all user settings	%ALLUSERSPROFILE%\Application Data\Olympus\ODMS_R8\DMTM\{Computer Name}.xml

3. Change the name of the copied XML file ({User ID}.xml or {Computer Name}.xml) to "CustomConfig.xml".

The preparation of the necessary configuration files is now complete.

4.6 Installing from Setup Wizard

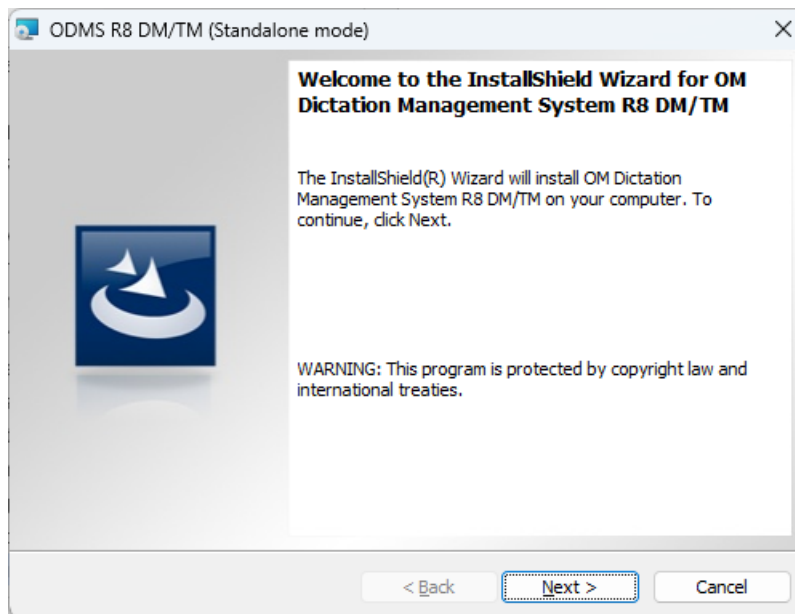
To install ODMS R8 using Setup Wizard, click **Client Package** -> "ODMS R8 MSI Package" in the launcher window to execute Setup.exe.

When Setup Wizard starts, perform the installation as described in the following procedure.

■ Procedure

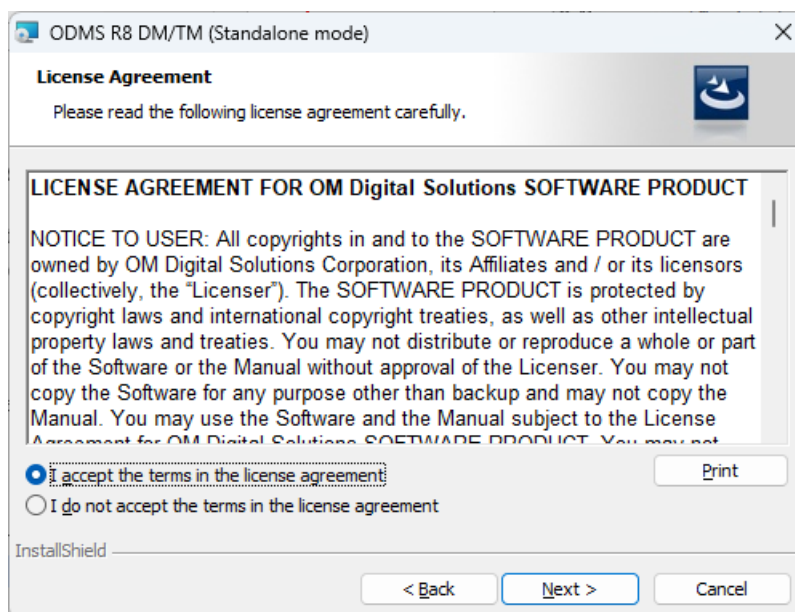
1. When you execute Setup.exe, Setup Wizard starts.

→ The installation program will automatically start, and a welcome dialog box will appear.



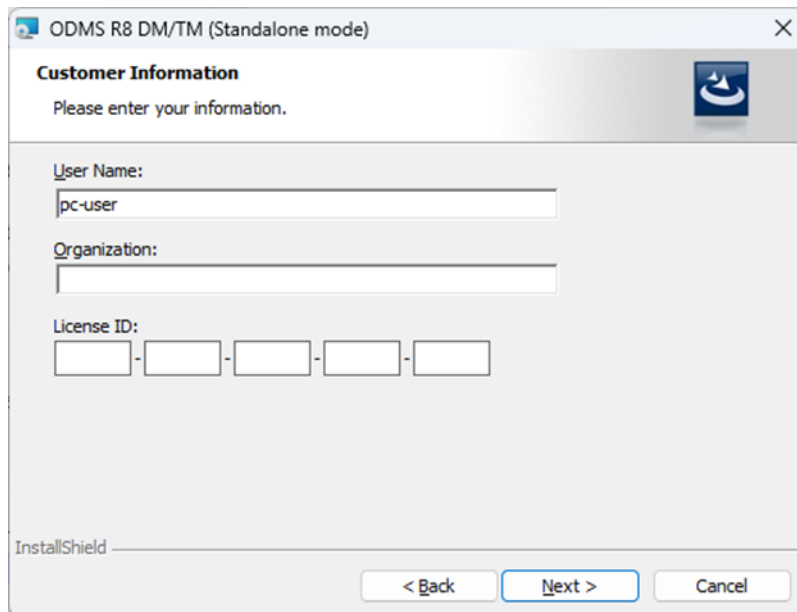
2. Click [Next].

→ The License Agreement dialog box will appear.



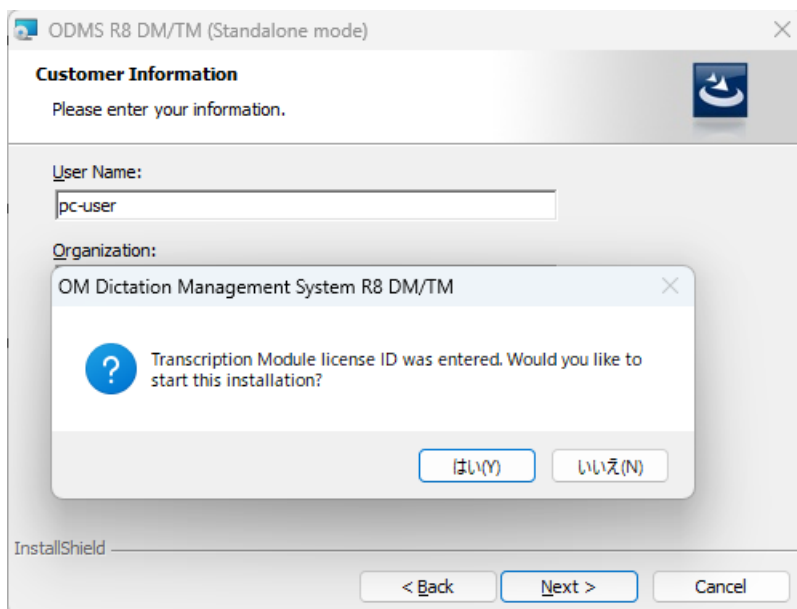
3. Accept the license agreement, and then click [Next].

→ The Customer Information dialog box will appear.



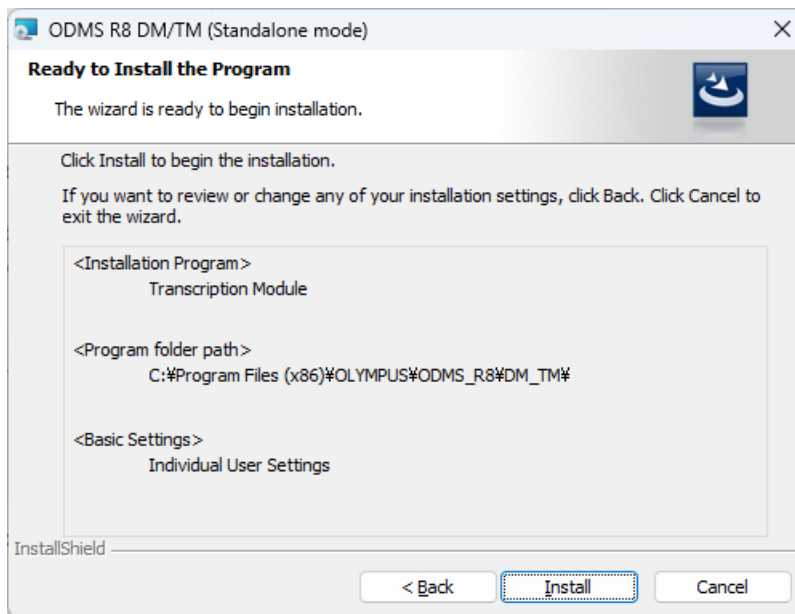
4. Enter a user name, a company name, and a license key for a standalone system, and then click [Next].

→ A message confirming the application to be installed will appear.



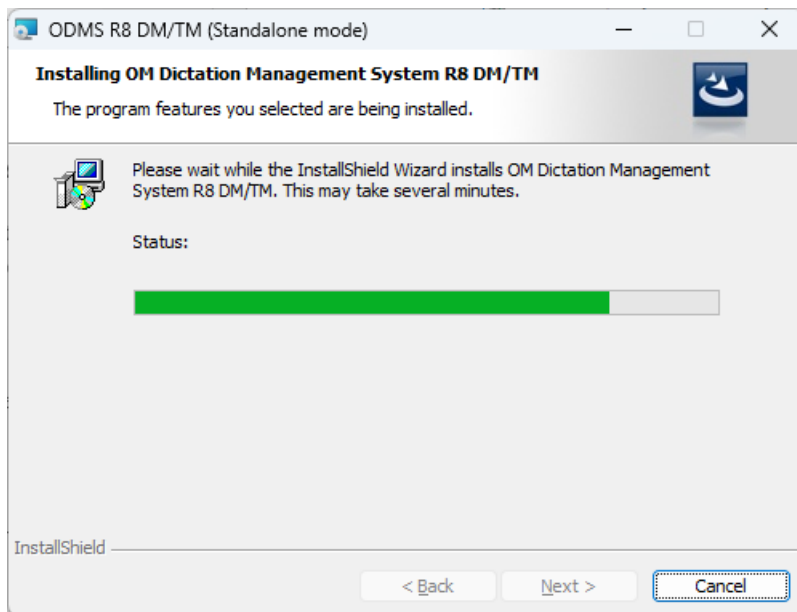
5. Specify a program folder for installation, and then click [Next].

→ The Ready to Install the Program dialog box will appear.

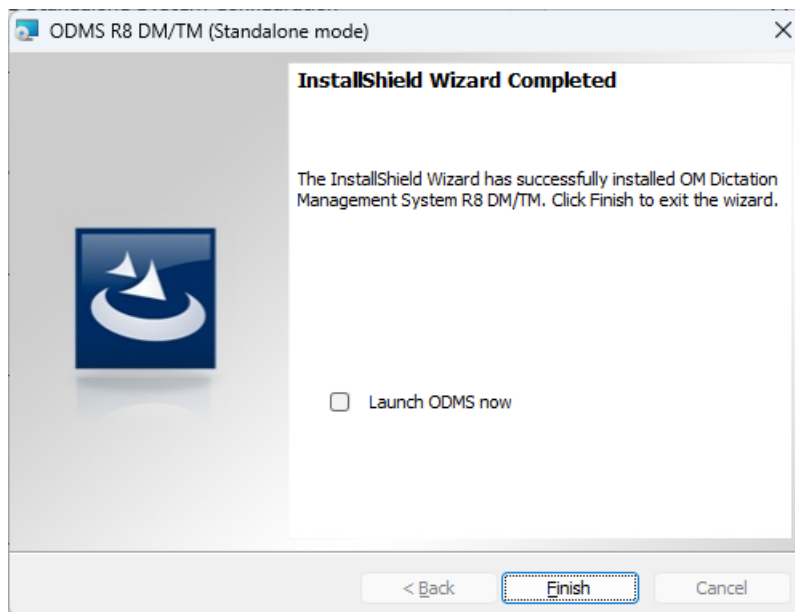


7. Check installation information.



A progress bar is displayed in a dialog box during the installation.



When the installation is complete, the InstallShield Wizard Completed dialog box will appear.

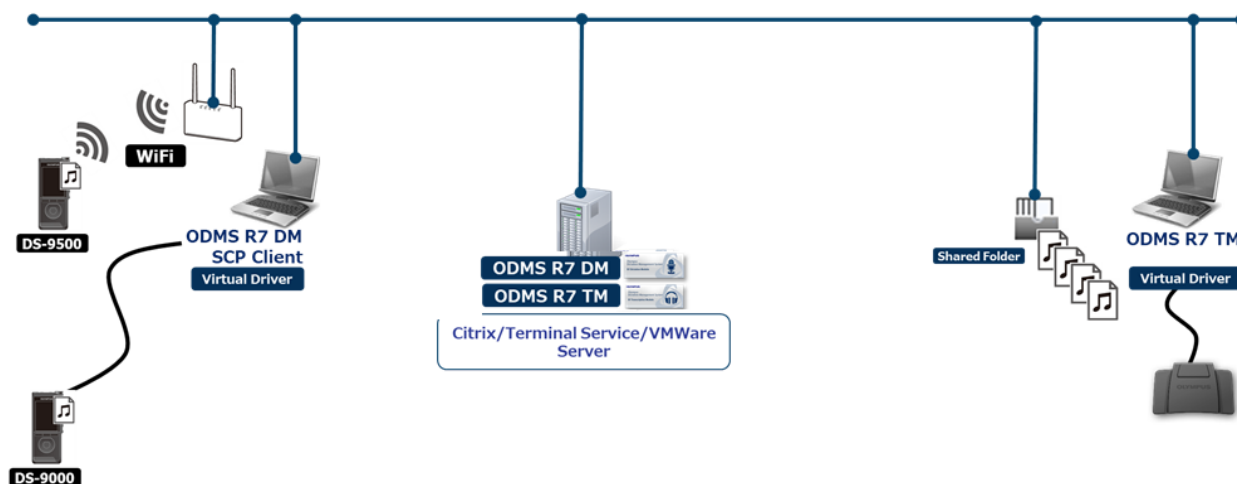


8. Click [Finish].

	To start the installed application when you exit the installer, select the check box on the InstallShield Wizard Completed dialog box.
	To restore ODMS R7 after upgrading to ODMS R8, uninstall ODMS R8 and then reinstall ODMS R7.

4.7 Using a virtual environment

The following figure is an example of ODMS R8 built in a virtual environment, and shows the required licenses and modules.



Required Licenses

- ODMS R8 Dictation Module volume license (Concurrent)
- ODMS R8 Transcription Module volume license (Concurrent)

Modules to Be Installed

- ODMS R8 Dictation Module (server side)
- ODMS R8 Transcription Module (server side)
- ODMS R8 Client Virtual Driver (client side)

5 Distributing Software

A package that can be automatically distributed with ODMS consists of the executable file (MSI file) of the Windows installer (msiexec) and its related files. If the environment has Active Directory of Windows Server deployed, the administrator can publish the update program (MSI package) of each software in Active Directory to install the software remotely by associating and registering this MSI package with Group Policy.

This chapter explains about the installers included in ODMS R8 Standalone Launcher, the procedure to automatically distribute using Group Policy of Active Directory, and the installation procedure using a batch file.

The following packages can be automatically distributed with ODMS R8 Standalone Launcher.

- .NET Framework4.8
- Dictation Module
- Transcription Module

Furthermore, in addition to the MSI files, there are configuration files that need to be included as configuration files for distribution.

File	Description
netfx_Full_x86.msi netfx_Full_x64.msi	This is the MSI file of .NET Framework 4.8. Specify the package suitable for the environment.
ODMSR8STD.DAT	This is the license file included in the installation package in an automatic distribution installation. Placing it in the same folder as the installer and then executing the installer enables the license keys for the number of users to be managed in a single file. For how to obtain ODMSR8STD.DAT, refer to " 4.5.1 Obtaining volume license key (ODMSR8STD.DAT file) ".
CustomConfig.xml	This is the file that regulates the initial values of the application settings of Dictation Module/Transcription Module, and is an option that is applied for a standalone system. If the application is installed using the default settings, this file is not needed. The application can be installed with customized application settings by including CustomConfig.xml in the installation package. For details about how to make one, see " 4.5.2 Creating CustomConfig.xml (Optional) ".
ODMSClient.msi	This is the installation and update program of Dictation Module and Transcription Module.





- For details on how to build and configure the Active Directory environment, refer to Help of the operating system you are using.

5.1 Preparing an Installation Package for Distribution

ODMS is software that operates in .NET Framework 4.8 so if .NET Framework 4.8 is not installed, you need to install it in advance. In the case of an update or upgrade, .NET Framework 4.8 will already be installed so prepare only the package to be installed.

Refer to the following sections and then prepare each package.

- ☐ [Preparing .NET Framework 4.8](#)
- ☐ [Preparing an Installation Package](#)

	<ul style="list-style-type: none">Automatic distribution by MSI supports .NET Framework and the installers and update programs for Dictation Module/Transcription Module and SCP Client. Other distributed applications cannot be installed automatically by MSI.
	<ul style="list-style-type: none">For details on how to build and configure the Active Directory environment, refer to Help of the operating system you are using.

5.1.1 Preparing .NET Framework 4.8

ODMS is software that operates in .NET Framework 4.8. If .NET Framework 4.8 is already installed on the PC on which the software is to be deployed, skip this procedure because it is not necessary.

If .NET Framework 4.8 is not installed, prepare the .NET Framework 4.8 package as described in the procedure below.

■ Procedure

1. Copy the following Dotnet4_8 folder to the desktop in order to extract the package.

The .NET Framework installer is stored in the following location of Launcher.
<Root>¥Dotnet¥DotNet4_8¥NDP48-x86-x64-AllOS-ENU.exe

2. At the command prompt, use the "cd" command to move to the DotNet4_8 folder.
3. Execute the following command:

NDP48-x86-x64-AllOS-ENU.exe /x:netinst

➔ The "netinst" subfolder is created below the Dotnet4_8 folder and the installation package is extracted.

5.1.2 Preparing an Installation Package

Copy the ODMS installation package to be distributed to a shared folder.

Refer to the following procedures for the distribution target modules.

When Installing Dictation Module/Transcription Module

■ Procedure

- 1.** Create a **shared folder** for publishing the package.
When doing so, for the access permissions of the shared folder, configure the settings for the users you wish to allow access in the security settings of the folder properties to enable access by the users target for distribution.
(Please grant Read & execute authority to at least Authenticated Users group.)
- 2.** When .Net Framework 4.8 is to be installed, copy the netinst folder created in [5.1.1 Preparing .NET Framework](#) into the shared folder.
This work is not required if .NET Framework 4.8 is already installed.
- 3.** Copy [ODMS R8 MSI Package](#) to the shared folder created in **step 1**.
- 4.** Next copy the [license file \(ODMSR8STD.DAT file\)](#) acquired in a previous procedure and [CustomConfig.xml file](#) in the same way to the shared folder.



Which applications can be installed to the client PC depends on the license key registered in ODMSR8STD.DAT. If you want Dictation Module and Transcription Module to run on different client PCs, make two copies of the installer in "[5.1 Preparing an Installation Package for Distribution](#)", and then copy ODMSR8STD.DAT for each application to the corresponding folders. Create a special organization for distributing each installer (ex. "Author"/"Transcriptionist"), then configure each organization by following the procedures described in this section.

The preparation of an installation package for distribution is now complete.

5.2 Preparing a Script File for Distribution

This section explains about the script file for distribution. The script file is created as a batch file and included in the shared folder for distribution. Be careful because the installation options differ between a new installation and an upgrade installation.

■ Procedure

1. Open a text editor and create a script for executing the installer.
Edit the script file while referring to the following examples of installation options.
Edit the {"ShareServer¥ODMS¥..¥"} path of the prepared MSI to match it to the actual environment of the shared folder.
2. Once editing of the script is completed, change its name to "ODMS_Distribution.bat" and then copy it into the shared folder created in 5.1.2 Preparing an Installation Package.

ODMS R8 Install option

New Installation Examples

■ Example of when installing Dictation Module/Transcription Module in a standalone system (.NET Framework 4.8 x86 is also installed)

```
msiexec /i "%¥¥ShareServer¥ODMS¥..¥netinst¥netfx_full_x86.msi /q
msiexec /i "%¥¥ShareServer¥ODMS¥..¥ODMSClient.msi" SYSTEM=STANDALONE
SETTING=INDIVIDUAL /qn /l c:¥instlog.txt
```

■ Example of when changing the license file name to other than ODMSR8STD.DAT (ODMS_LIC.DAT) and then installing (.NET Framework 4.8 x86 is also installed)

```
msiexec /i "%¥¥ShareServer¥ODMS¥..¥netinst¥netfx_full_x86.msi /q
msiexec /i "%¥¥ShareServer¥ODMS¥..¥ODMSClient.msi" SYSTEM=STANDALONE
LICENSE=ODMS_LIC.DAT SETTING=INDIVIDUAL /qn /l c:¥instlog.txt
```

Upgrade Installation Example

■ Example of when upgrade installation from R7 (.NET Framework 4.8 x86 is also installed)

```
msiexec /i "%¥¥ShareServer¥ODMS¥..¥netinst¥netfx_full_x86.msi /q
msiexec /i "%¥¥ShareServer¥ODMS¥..¥ODMSClient.msi" SYSTEM=STANDALONE
```

SETTING=INDIVIDUAL REINSTALL=ALL REINSTALLMODE=vomus /qn /l c:¥instlog.txt

Patch Program Application Example

■ Example of when applying a patch program to installed Dictation Module/Transcription Module

To apply a patch program, you need to also store the patch program in the shared folder for distribution.

"¥¥ShareServer¥ODMS¥..¥ R8xxPatchxxxx.EXE" /q:a /c:"PatchInstaller /q /i"

(When the file name of the patch program is R8xxPatchxxxx.EXE)

5.3 Automatic Distribution by Group Policy

When the software is to be installed on multiple PCs, the time and effort can be reduced by automating distribution.

If the administrator configures distribution settings by Group Policy in advance, the installer will run automatically in the background without displaying a GUI when users start up their PCs. (Silent Install)

Using this method makes it possible for applications to be automatically distributed without the users of the software having to be aware of the installation. Verify the deployment on a PC only for verification before distributing the software to all members and then deploy the software for all members.

Check that the procedures of [Preparing an Installation Package for Distribution](#) and [Preparing a Script File for Distribution](#) are complete in advance and then refer to the following sections and configure the distribution settings.

- ☐ [Registering the Organization to which Applications Are Distributed](#)
- ☐ [Registering Group Policy](#)
- ☐ [Automatic Distribution of Software by Startup Script](#)

5.3.1 Registering the Organization to which Applications Are Distributed

Create an organization (OU) for the PCs (computers) target for automatic distribution of software as described in the following procedure.

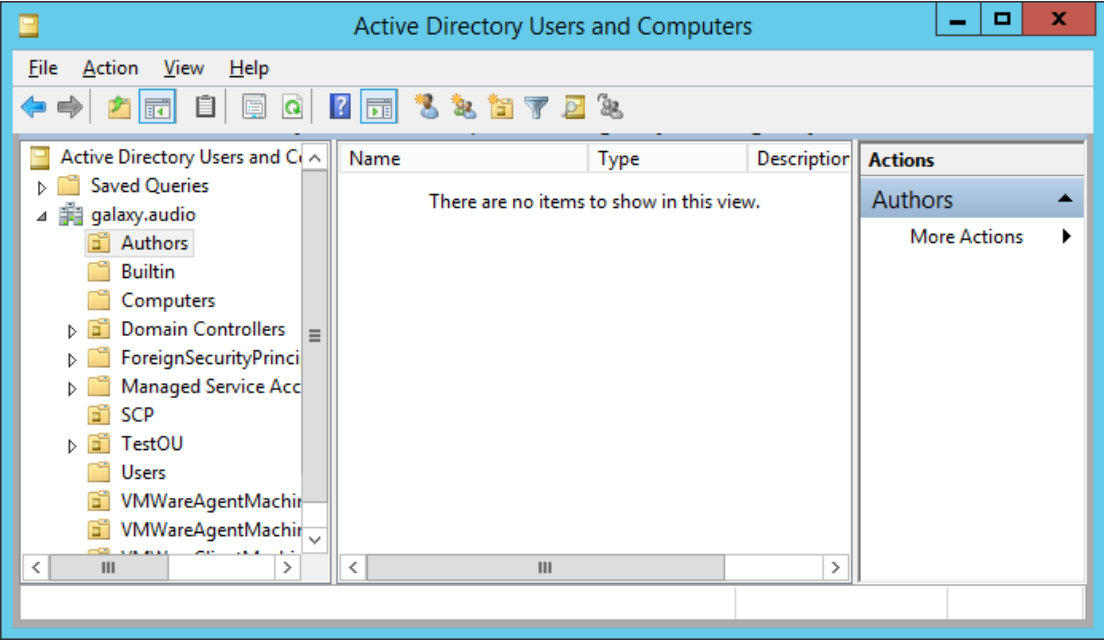
■ Procedure

1. Open Server Manager, click [Manage] at the top right, and then select [Active Directory Users and Computers] from the displayed menu.

→ An Active Directory Users and Computers dialog box will appear.

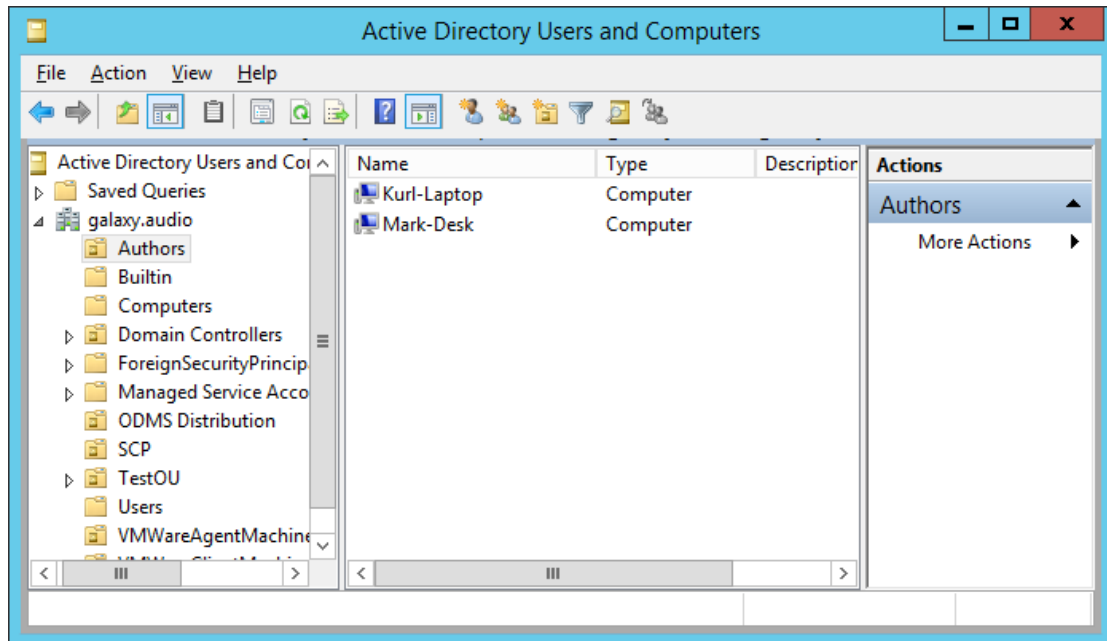
2. Create a new organization (OU).

→ Select a Domain name in the tree view, then right-click.
Select [New] – [Organizational Unit] from the menu, enter the organization name (ex., “Authors”) then click [OK].



3. Register the desired computer to the organization (OU).

- Select "Computers" in the tree view and select the name of a distribution target PC registered as the management target of Active Directory. Select [Move] in the context menu of the selected PC, and then move the PC to the created organization (Authors) by dragging and dropping it.
(The figure below shows registration of two PCs: Kurl-Laptop and Mark-Desk.)



5.3.2 Registering Group Policy

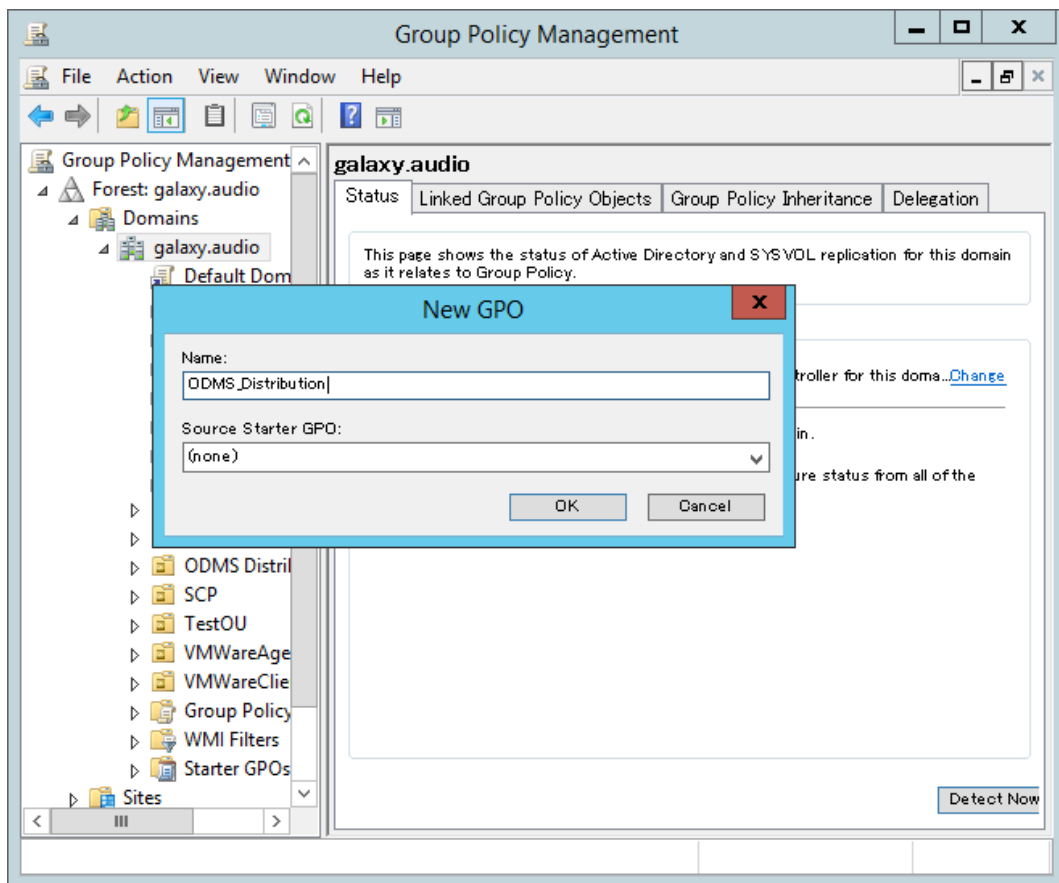
Register the group policy to apply to the organization (OU) as described in the following procedure.

■ Procedure

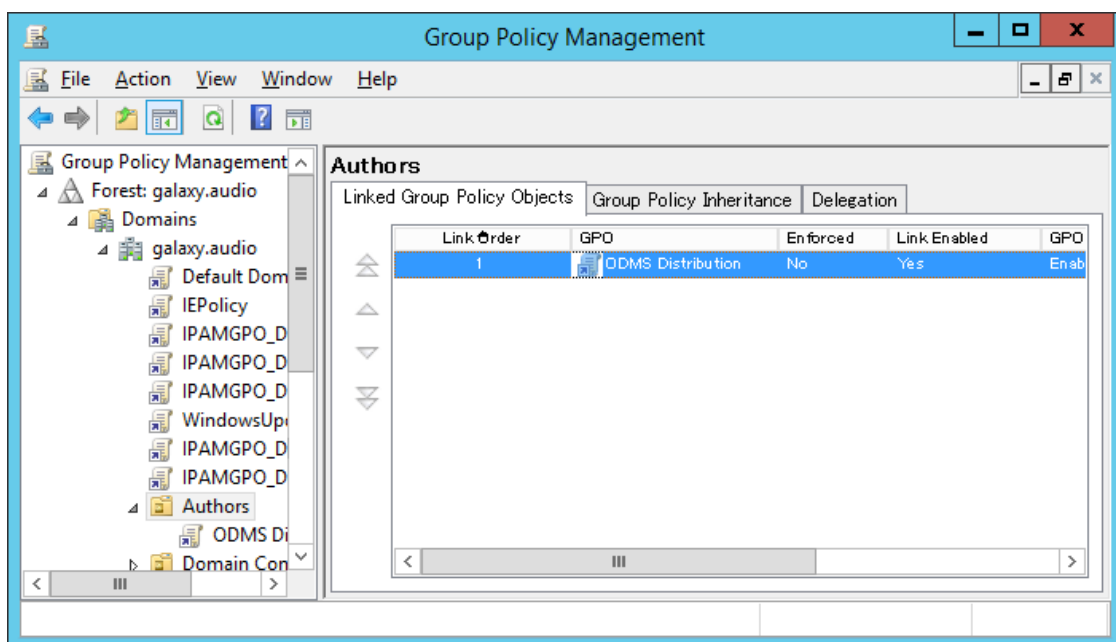
1. Open Server Manager, click [Manage] at the top right, and then select [Group Policy Management] from the displayed menu.

→ This starts up Group Policy Management.
2. Select the group name (Authors) you created in section 5.3.1 , and then click [Create GPO in this domain and link to this container] on the shortcut menu.

→ The New GPO dialog box will appear.
3. Set the group policy name (ODMS_Distribution) in the [Name] field, and then click the [OK] button.



4. In Group Policy Management, select the organization name (Authors) you added in section 5.3.1 . In the right pane, check that the group policy you added in step 3 has been added to the list.



5.3.3 Automatic Distribution of Software by Startup Script

The following explains the registration procedure to automatically distribute the software when PCs start up, which is achieved by the administrator creating a startup script containing an MSI execution option and then registering it to run at the startup of each user's PC.

For distribution

■ Procedure

1. Prepare the installation package for automatic distribution.

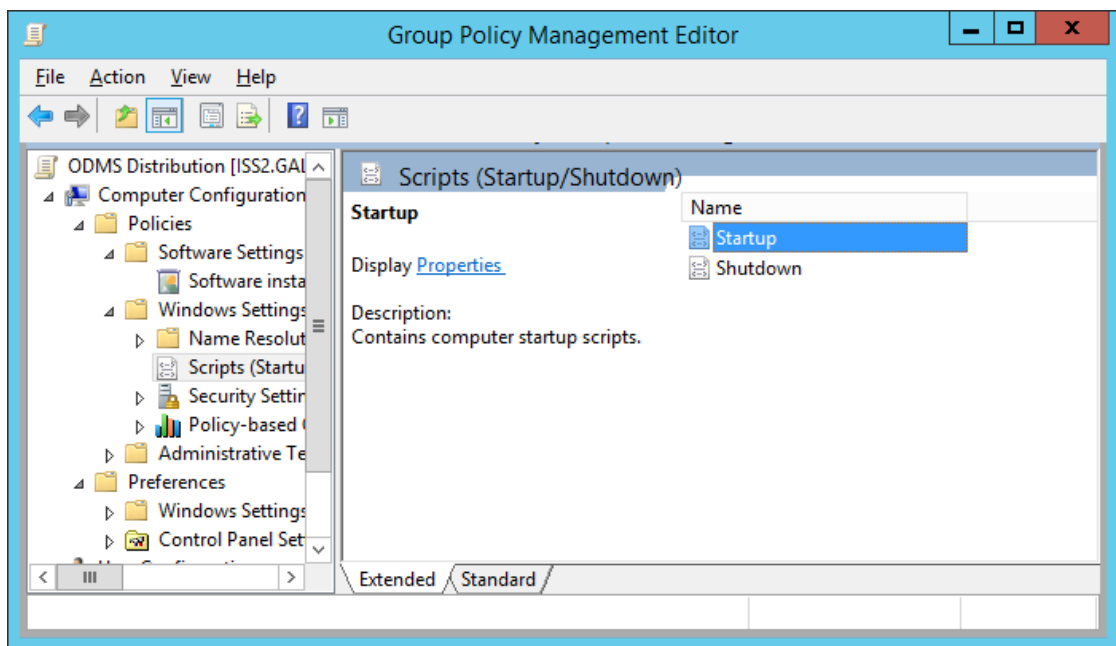
Extract the installation package for distribution as described under “5.1 Preparing an Installation Package for Distribution”.

2. Open Server Manager, click [Tools] at the top right, and then select [Group Policy Management] from the displayed menu.

→ The Group Policy Management Editor appears.

3. Open [Policies] - [Windows Settings] - [Scripts].

→ The Group Policy Management Editor appears.



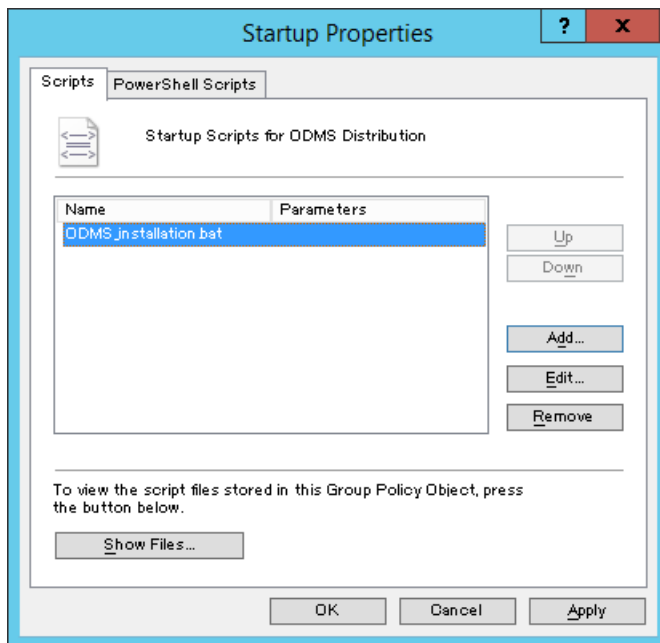
→ The startup properties appear.



Selecting Startup or Shutdown

When the user starts up the PC, it will take a while until the PC is up and running because the installation operation will begin before login.
The installation process can also be executed when the PC shuts down by registering the script to run at shutdown.

4. Select Startup (or Shutdown) and double-click it to open the properties.
Click the [Add] button and then specify the created script file.



→ Click the [OK] button to complete the registration.

- 5.** To enable the registered group policy, click "Authors" in "Group Policy Management" and select "Group Policy Update" from the context menu.

→ The settings are now finished.

After the update is completed, the policy will be applied when each user starts up their PC, and the software will be distributed automatically.



Checking the Windows installer log

In the event that the installation fails for a user, the Windows installer log is saved at c:\¥install_log.txt on the corresponding local PC so you can check the log to analyze what went wrong.

5.4 Installation by Batch File

This section explains how to install the software easily by having each user execute the batch file of the ODMS R8 installer extracted in a shared folder using [ODMS R8 MSI Package](#) included in ODMS R8 Standalone Launcher.



Each user must have administrator privileges to execute the installer.

Check that the procedures of [Preparing an Installation Package for Distribution](#) and [Preparing a Script File for Distribution](#) are complete in advance and then refer to the following sections and configure the distribution settings.

■ Procedure

1. Check that the following file is set in the shared folder.
2. Open the script file for distribution (ODMS_Distribution.bat) that you created before, and add the script to the top and bottom.

echo off
echo ODMS R8 installation starting.
start /wait msixexec /i "{Server Path}¥ODMSClient.msi" /qn /I "c:¥install_log.txt"
echo ODMS R8 installation finished.
Pause



Checking the Windows installer log

In the event that the installation fails for a user, the Windows installer log is saved at c:¥install_log.txt on the corresponding local PC so you can check the log to analyze what went wrong.

3. Notify the user of the path of the created shared folder and batch file.
The settings are now finished. When each user executes the specified batch file, the command prompt starts and ODMS R8 is installed.

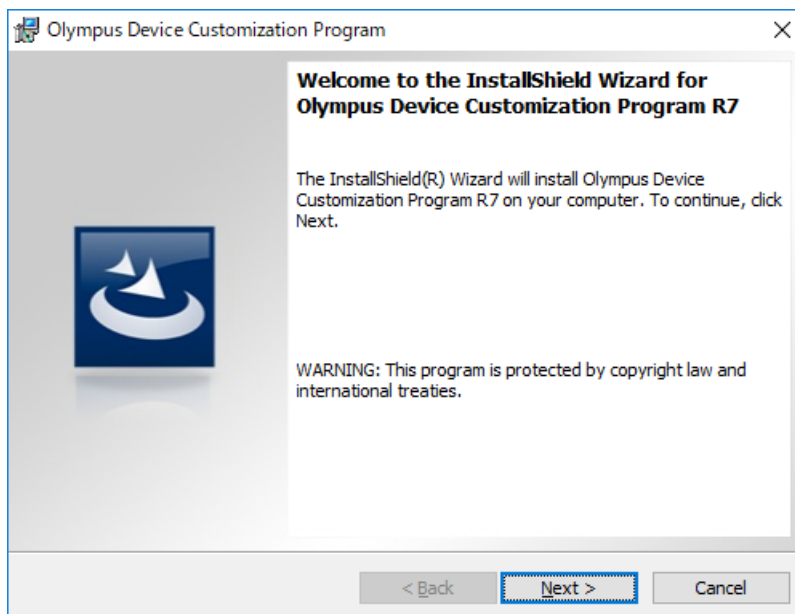
6 Installing Device Customization Program

This chapter explains the procedure for installing Device Customization Program.

Perform the following procedure for a new installation of Device Customization Program.

■ Procedure

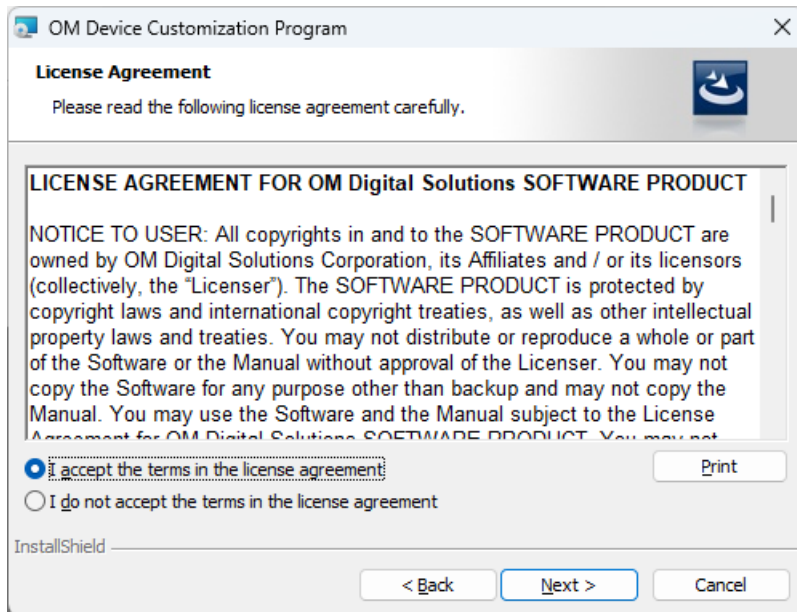
1. Select **Other tools** in the ODMS R8 Standalone Launcher screen, and then click "DCP Installation" to run the installer.



→ The installation program will automatically start, and a welcome dialog box will appear.

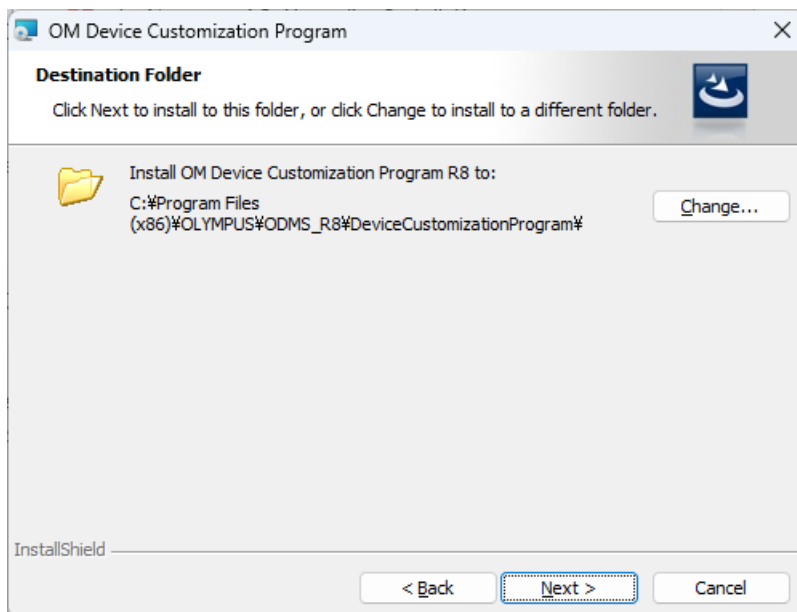
2. Click [Next].

→ The License Agreement dialog box will appear.



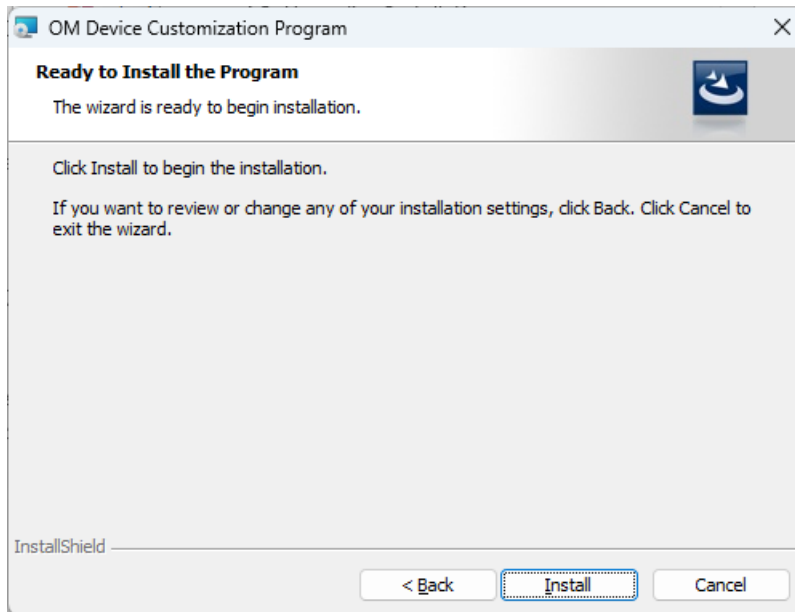
3. Accept the license agreement, and then click [Next].

→ The Destination Folder dialog box will appear.



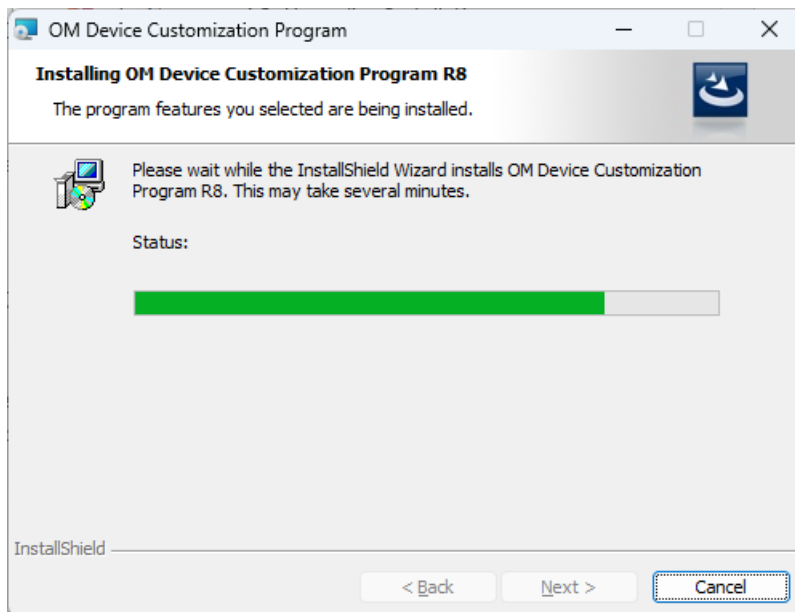
5. Specify a program folder for installation, and then click [Next].

→ The final confirmation screen will appear.

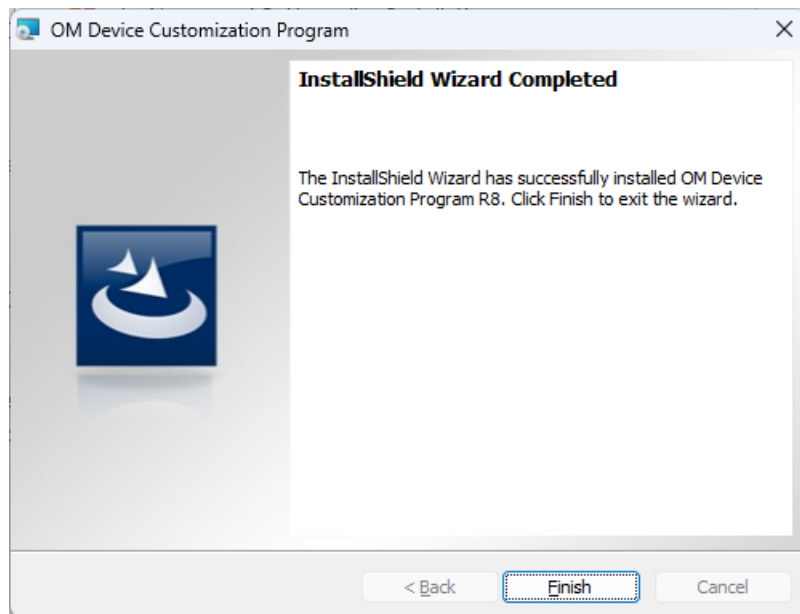


6. Check installation information.

→ A progress bar is displayed in a dialog box during the installation.



→ When the installation is complete, the InstallShield Wizard Completed dialog box will appear.



7. Click [Finish].



When the installer finishes, start Device Customization Program by selecting Device Customization Program from OM Dictation Management System in the Start menu.

7 Installing ODMS Downloader Tool for DPM

This chapter explains the procedure for installing ODMS Downloader Tool for DPM.

Perform the following procedure for a new installation of ODMS Downloader Tool for DPM.

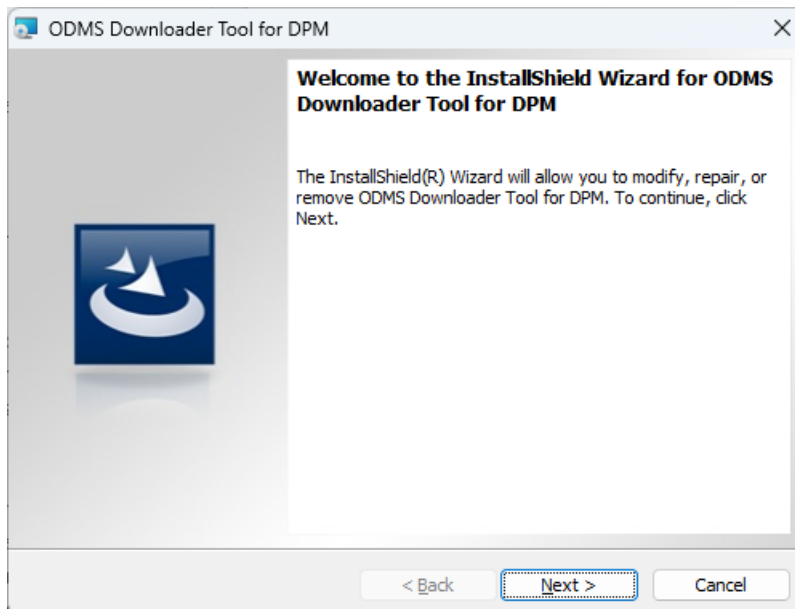
You can also use the "/qn" option for a silent installation.

```
msiexec.exe /i "%¥¥ShareServer¥ODTD¥ODMSDownloaderToolForDPM.msi" /qn /l c:¥odtdlog.txt
```

■ Procedure

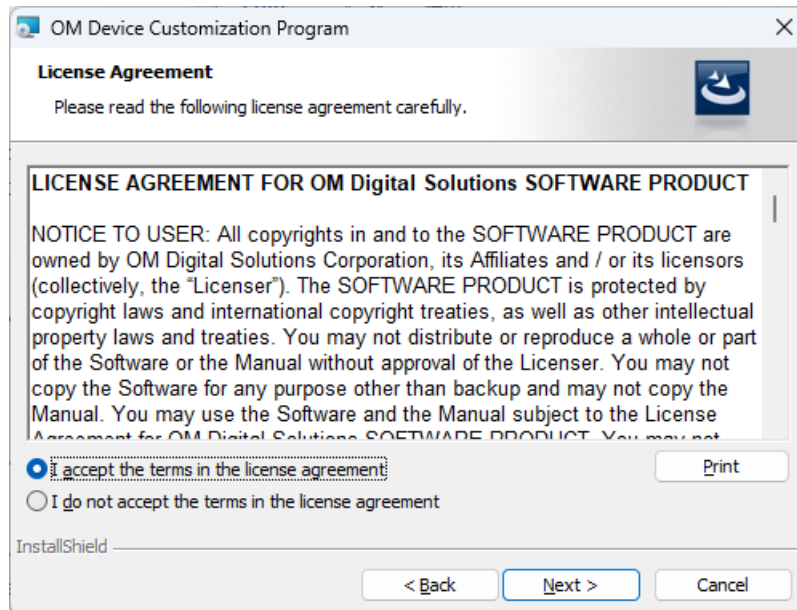
1. Select **Other tools** in the ODMS R8 Standalone Launcher screen, and then click "ODMS Downloader Tool for DPM" to run the installer.

➔ The installation program will automatically start, and a welcome dialog box will appear.



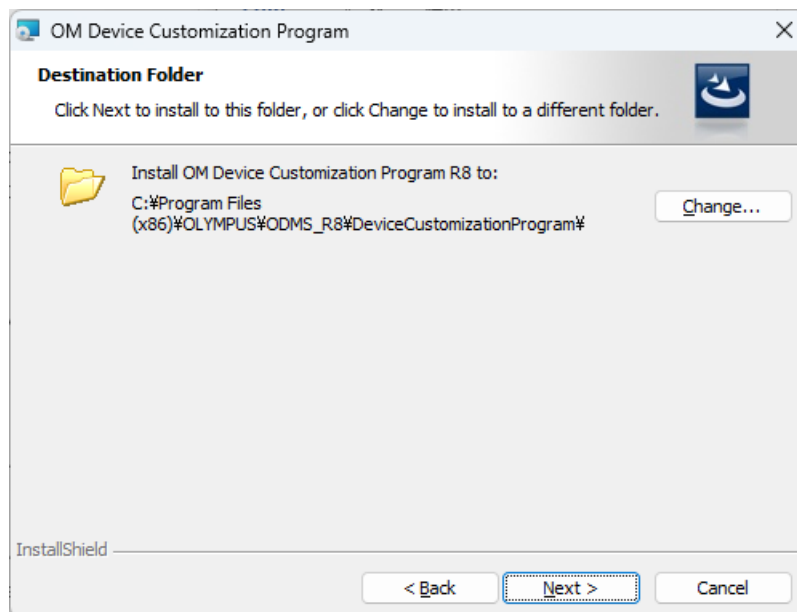
2. Click [Next].

→ The License Agreement dialog box will appear.



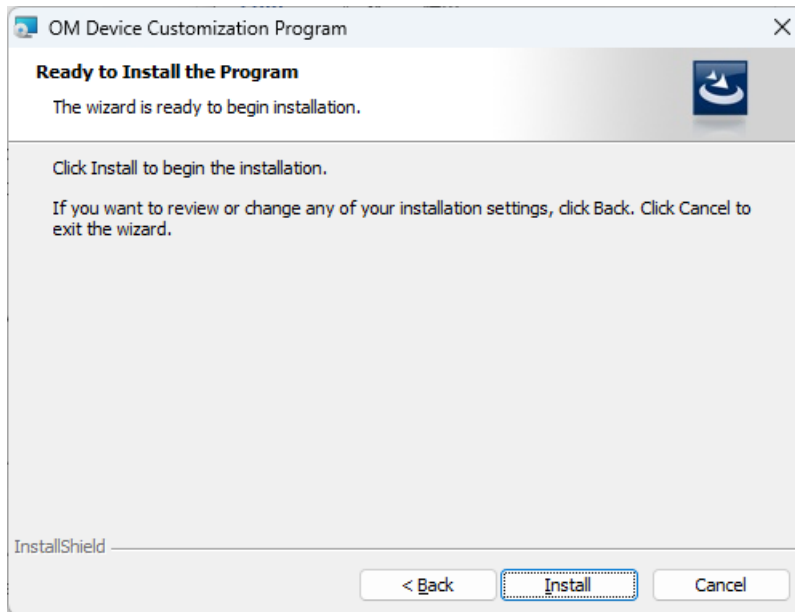
3. Accept the license agreement, and then click [Next].

→ The Destination Folder dialog box will appear.



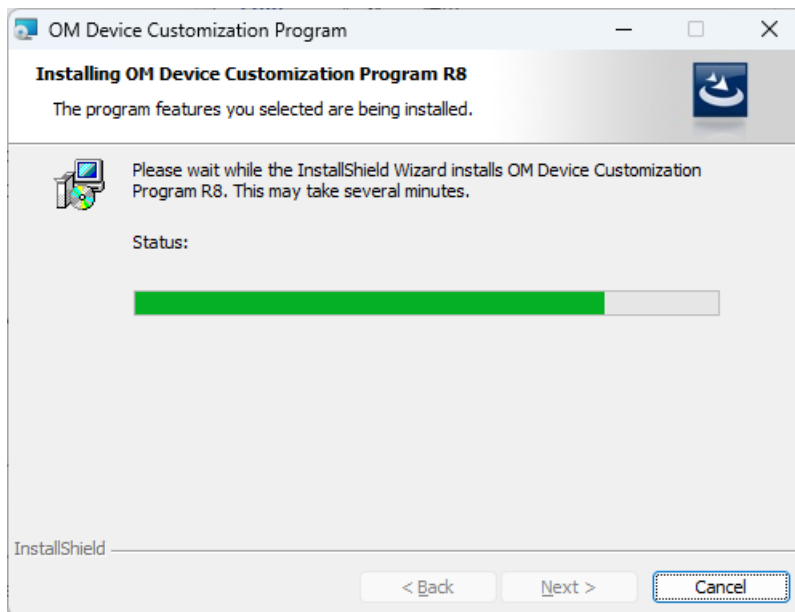
4. Specify a program folder for installation, and then click [Next].

→ The final confirmation screen will appear.

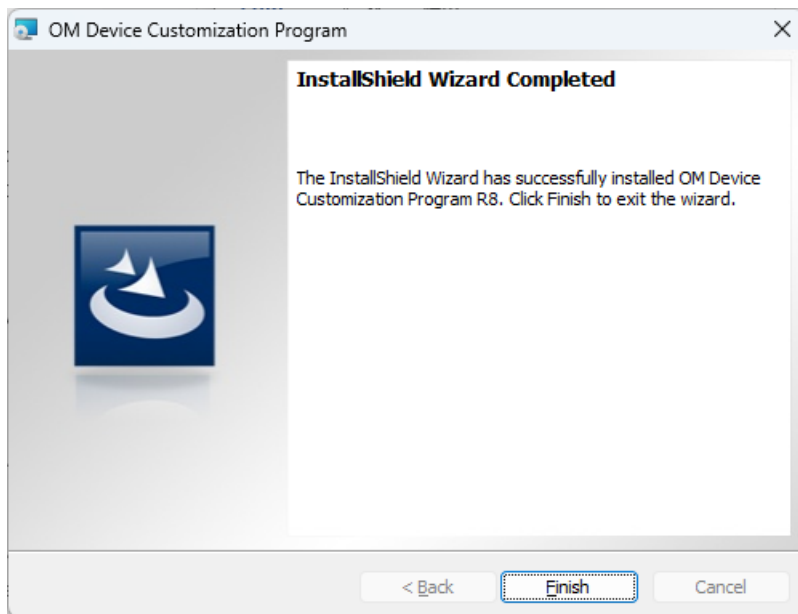


5. Check installation information.

→ A progress bar is displayed in a dialog box during the installation.



→ When the installation is complete, the InstallShield Wizard Completed dialog box will appear.



6. Click [Finish].



After the Installer is finished, the icon of "ODMS Downloader Tool for DPM" will be resident in the taskbar. Right-click on the icon, and you can configure the download settings from the Settings menu.

8 Reference Information

This section provides reference information.

8.1 How to Use Installation Options

Any one of the following methods can be used to configure installation option settings when installing the software.

Location	Description
Command line	msiexec /I <full path of msi> SYSTEM=STANDALONE... By adding options, the application can be installed at the command prompt.
Setup.ini	When installing using Setup.exe, options added in the Start-up section in Setup.ini will be reflected automatically. Example: [Startup] SYSTEM=STANDALONE :

8.1.1 ODMSClient.msi Installation Options

The table below shows the installation options of Dictation Module/Transcription Module.

Installation options are described as Option = Value.

Option	Value	Default value	Description
SYSTEM	STANDALONE	STANDALONE	Specify the system to be installed
USER	User name (string)	User name of PC	Specifies the user name of the user.
COMPANYNAME	Company name (string)	Company name of PC	Specifies the company name of the user.
LICENSE	License file name (String)	ODMSR8STD.DAT	Specifies the license file name. The file name can be set to anything you like, but place the file in the same folder as ODMSClient.msi before you specify it.
DEST	Installation destination (string)	%PROGRAMFILES(X86)% ¥Olympus¥ODMS_R8¥DM_TM	Specifies the installation destination. In the case of a 32-bit platform, specify %PROGRAMFILES%¥Olympus¥ODMS_R8¥DM_TM.
SETTING	{ INDIVIDUAL ALLUSER }	INDIVIDUAL	Specifies whether environment settings or audio files are stored for each log-in user or stored as shared files.

9 Troubleshooting

This chapter assists in solving problems with Standalone Installation Guide.

9.1 Cannot Install

The following cases are possible if Dictation Module/Transcription Module installation fails.

Earlier Version Is Already Installed.

Upgrading to ODMS R8 from ODMS R7 is possible, but directly upgrading to ODMS R8 from ODMS R6 or an earlier version is not possible. Uninstall the old product and then perform a new installation of ODMS R8.

ODMS R7 Is Installed in Workgroup Mode.

If ODMS R7 is installed in Workgroup mode, upgrading in the standalone mode of ODMS R8 is not possible. Uninstall the old product and then perform a new installation of ODMS R8.

9.2 Starting Dictation Module or Transcription Module Not Allowed.

If Dictation Module or Transcription Module is installed without a license, you can try it out for 60 days after installation, but once 60 days elapse, it can no longer be started.

10 Support Contacts

For Purchasing License Keys

To purchase the following license keys, please contact your dealer or distributor.

Inquiries Regarding Malfunctions

When submitting a query, the information below needs to be provided to our support staff along with the details of your problem. Please keep the following data handy.

- Type of PC (manufacturer and model)
- Memory capacity
- Hard disk space
- OS and version
- Connected peripheral devices

For assistance in solving a problem such as a malfunction, please contact your dealer or distributor.

Other Support

Various types of information, including product specifications, PC connections, support for operating systems, and FAQs is available on our Web site. For the latest information, access the OM Digital Solutions website in your respective region.



The information provided may be subject to change without notice.

