



RecMic Configuration Tool

Installation Guide

RecMic



Contents

■ Trademarks.....	3
1 Introduction.....	4
2 Prepare for installation	5
2.1 System requirements.....	6
3 Install RecMic Configuration Tool.....	7
4 Administrative features.....	11
4.1 Configure user settings for RecMic Configuration Tool.....	11
4.1.1 Create a CustomConfig.xml	12
4.2 Command line installation	13
4.2.1 Language options.....	13
4.2.2 MSI properties for RecMic Configuration Tool.....	14
4.2.3 Sample command lines	14
5 Support contacts.....	16

■ Trademarks

- Microsoft, Windows, and PowerPoint are trademarks or registered trademarks of Microsoft Corporation in the United States and/or other countries.
- Nuance, Dragon, the Dragon logos, and Dragon NaturallySpeaking are trademarks or registered trademarks of Nuance Communications, Inc. or its affiliates in the United States and/or other countries.
- All other company and product names mentioned in this document are trademarks or registered trademarks of their respective owners.

1 Introduction

RecMic Configuration Tool is software that supports your workflow by using Olympus RecMic to control desktop applications. With this software, you can configure RecMic settings and assign functions that control applications to RecMic buttons.

RecMic Configuration Tool supports the following devices:

RecMic 2 (RM series)

- RM-4110S
- RM-4100S
- RM-4015P
- RM-4010P
- RM-4000P

RecMic 1 (DR series)

- DR-2300
- DR-2200
- DR-2100
- DR-1200

This installation guide provides information on installing RecMic Configuration Tool.

For information about the features of RecMic Configuration Tool, refer to the online help after installation.



This guide uses Windows 10 to explain operating procedures. Depending on the version of your OS, the screen display may be different.

2 Prepare for installation

Before installing RecMic Configuration Tool:

- Make sure your computer meets the [system requirements](#).
- Install pending Windows updates, and then restart the computer.
- Exit all open applications.

2.1 System requirements

Component	Requirement
OS	Microsoft® Windows® 7 <ul style="list-style-type: none">• Ultimate/Enterprise/Professional SP1 (x86/x64) Microsoft® Windows® 8.1 <ul style="list-style-type: none">• Enterprise/Pro (x86/x64) Microsoft® Windows® 10 <ul style="list-style-type: none">• Enterprise/Pro (x86/x64)
CPU	Microsoft® Windows® 7: 1 GHz or higher Microsoft® Windows® 8.1: 1 GHz or higher Microsoft® Windows® 10: 1 GHz or higher
Memory	Microsoft® Windows® 7: 1 GB or more (x86)/2 GB or more (x64) Microsoft® Windows® 8.1: 1 GB or more (x86)/2 GB or more (x64) Microsoft® Windows® 10: 2 GB or more
Hard disk space	30 MB or more (A separate space is required to install .NET Framework.)
USB port	One or more free ports
.NET Framework	.NET Framework 4.6
Speech recognition software	Dragon speech recognition software <ul style="list-style-type: none">• Dragon Professional/Legal Individual v14• Dragon Professional/Legal Individual v15



RecMic Configuration Tool does not support virtualized environments.

3 Install RecMic Configuration Tool

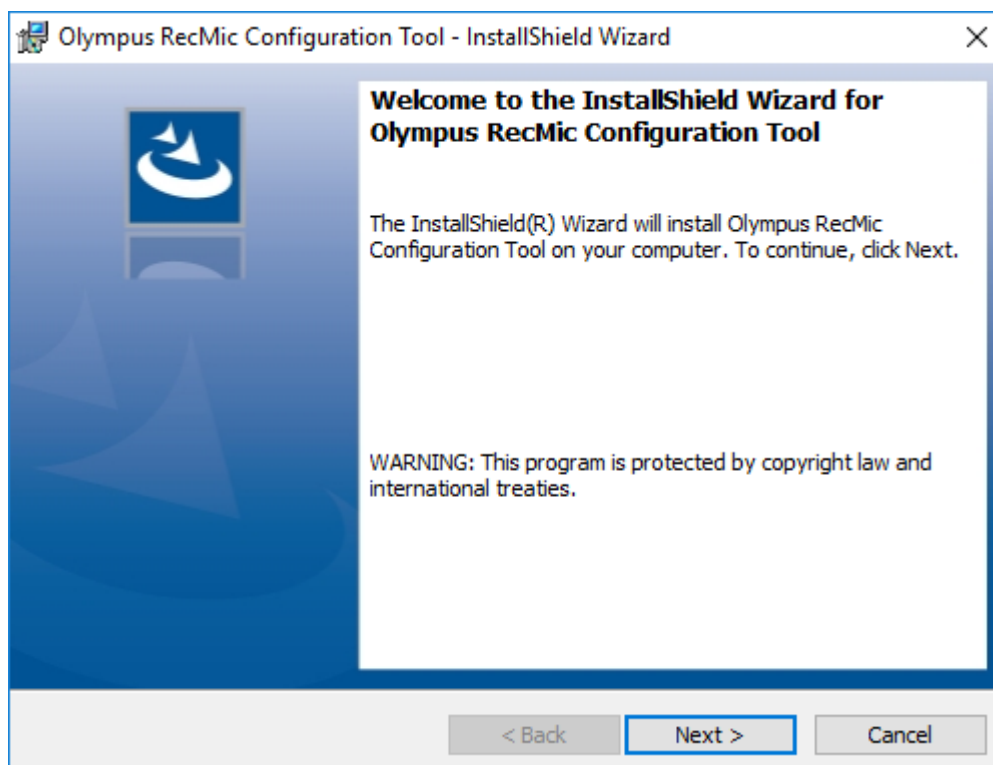
This topic provides a step-by-step procedure for installing RecMic Configuration Tool on a single computer.



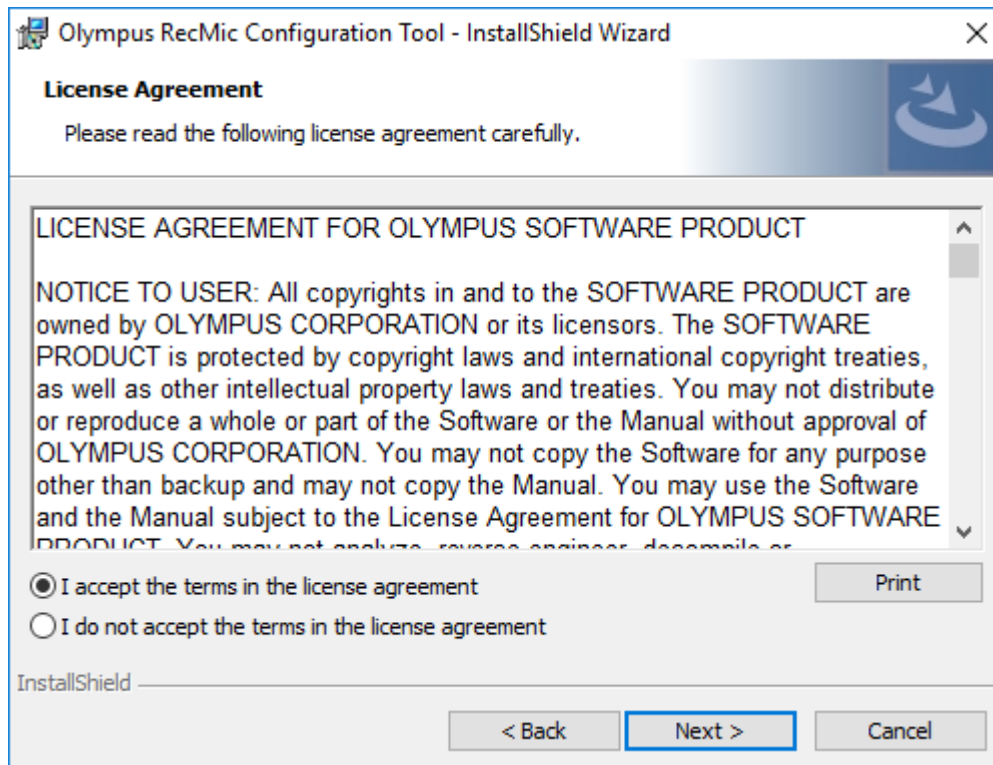
You must have administrator privileges to install RecMic Configuration Tool.

To install RecMic Configuration Tool

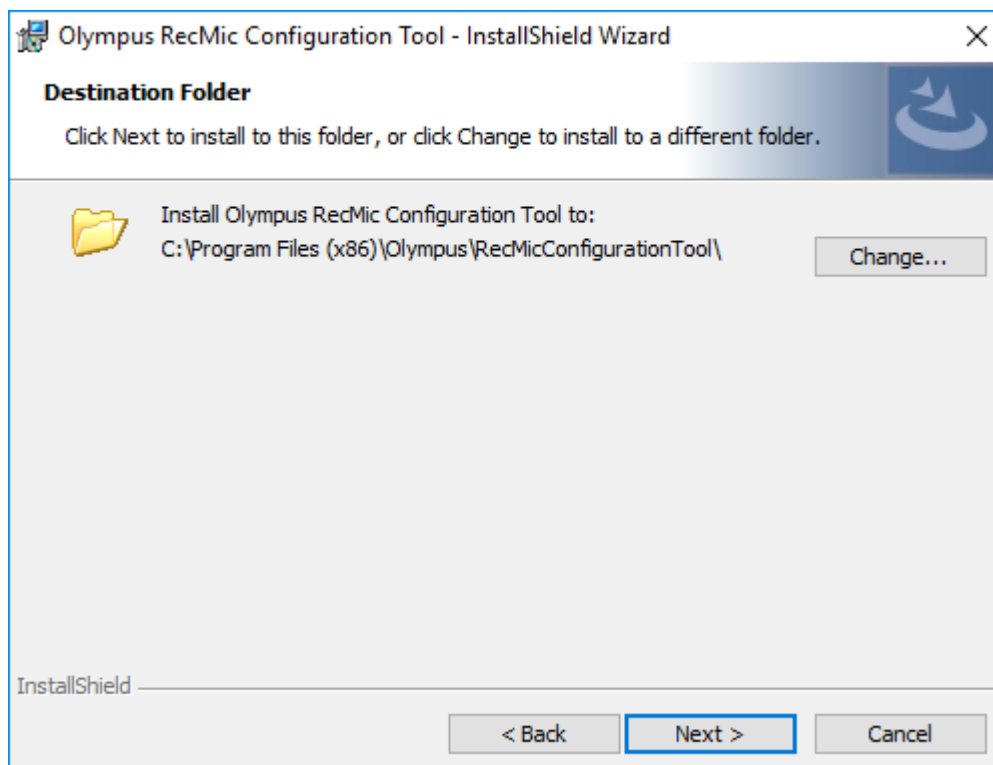
1. Double-click **setup.exe** in the **RCT_Installer** folder to install. If the **User Account Control** dialog box appears, click **Yes**.
2. In the language selection dialog box, select the language that you want to use during installation, and click **OK**.
 - If you are prompted to install Microsoft .NET Framework 4.6, click **Install**. Please wait until this installation is complete.
3. After the InstallShield Wizard starts, click **Next**.



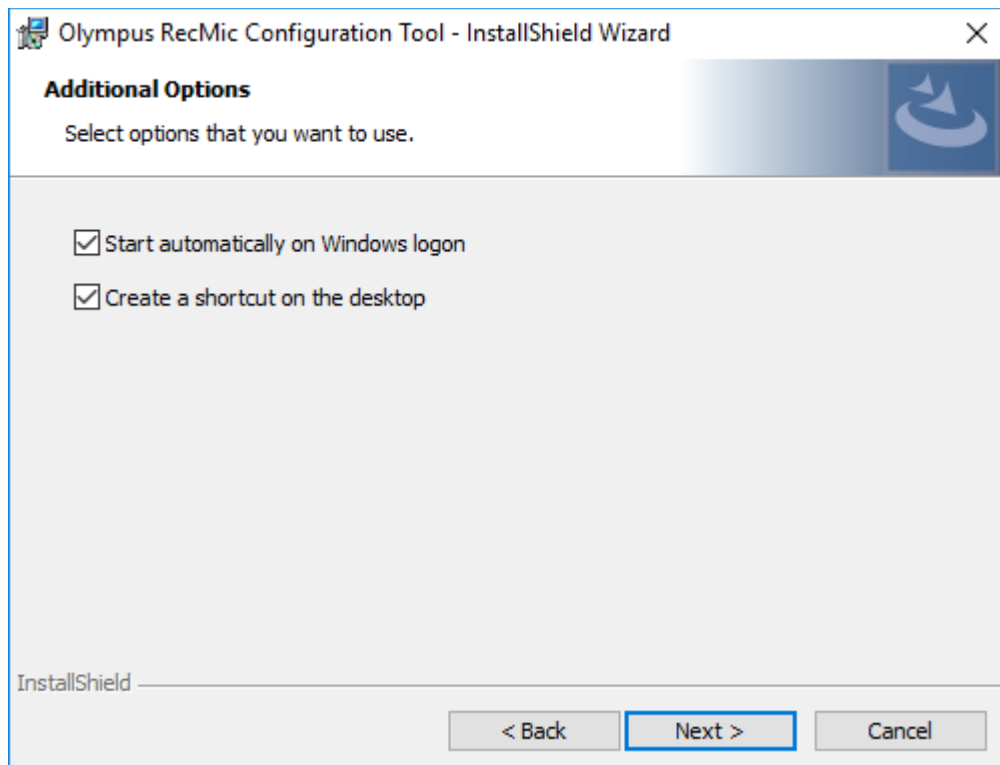
4. On the **License Agreement** page, accept the license agreement to continue the installation, and then click **Next**.



5. On the **Destination Folder** page, change the installation folder if required, and then click **Next**.



6. On the **Additional Options** page, select options that you want to use, and then click **Next**.



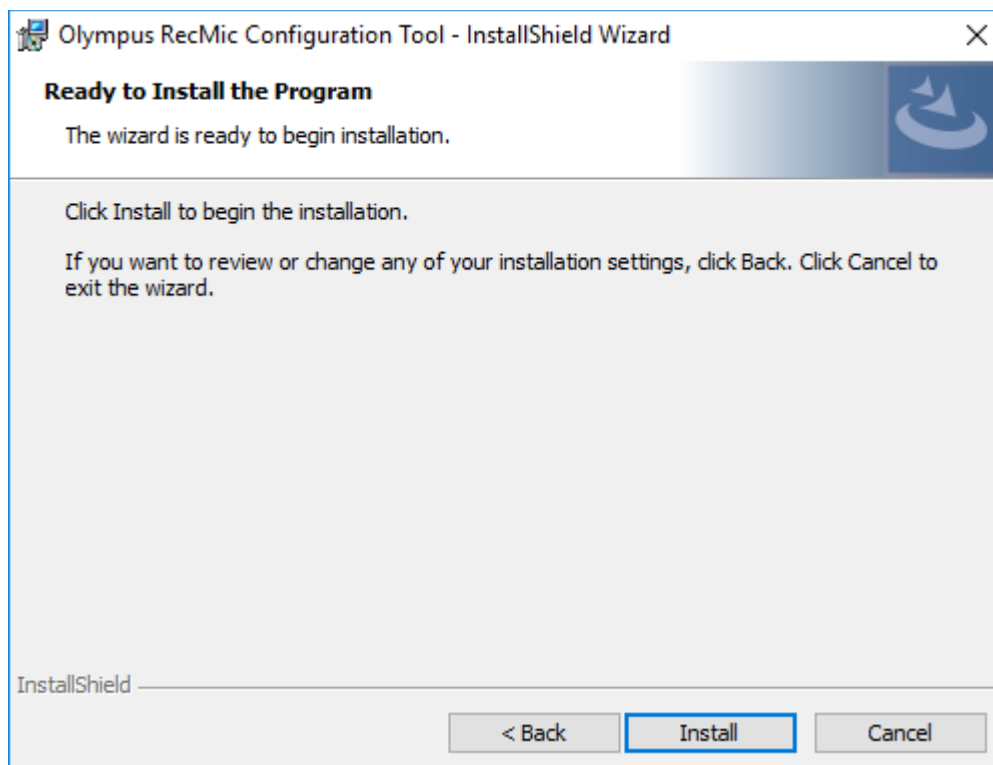
Start automatically on Windows logon

Click this check box to start RecMic Configuration Tool automatically on Windows logon.

Create a shortcut on the desktop

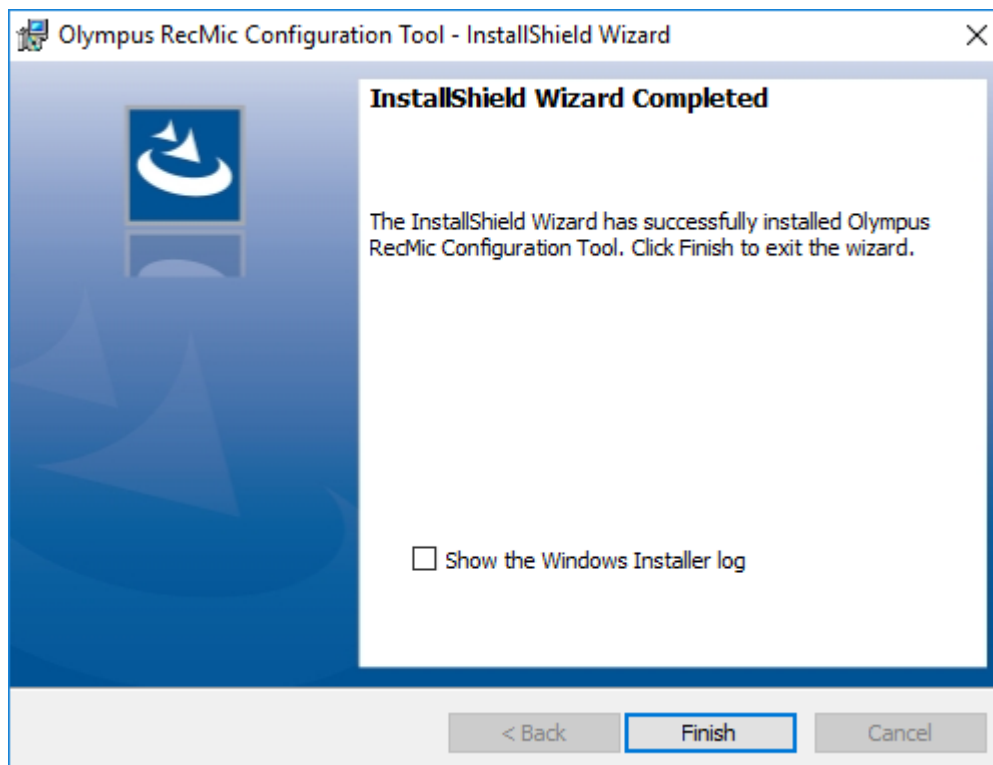
Click this check box to create a desktop shortcut to start RecMic Configuration Tool.

7. On the **Ready to Install the Program** page, click **Install**.



→ The installation of RecMic Configuration Tool starts. This may take a few minutes.

8. When the installation process is complete, the completion page appears. Click **Finish** to close the InstallShield Wizard.



4 Administrative features

This chapter is intended for administrators that install RecMic Configuration Tool to multiple client computers.

4.1 Configure user settings for RecMic Configuration Tool

This topic describes how to use the CustomConfig.xml to configure user default settings before you install RecMic Configuration Tool to your clients.



Configuring a user setting in this method is not necessarily permanent. It merely configures the initial default settings. The user can change settings after RecMic Configuration Tool is installed.

To configure and deploy user default settings

1. Copy all the files and folders from the **RCT_Installer** folder to a shared folder on the network. For example, copy the files to **\\Server\\Share\\RCT**.
2. Create a **CustomConfig.xml** by using RecMic Configuration Tool.
→ For more information, refer to "[Create a CustomConfig.xml](#)".
3. Copy the **CustomConfig.xml** to **\\Server\\Share\\RCT**. Make sure that the **CustomConfig.xml** is in the same location as **RecMicConfiguration.msi**.
4. On the user's computer, install RecMic Configuration Tool by running **setup.exe** from **\\Server\\Share\\RCT**.
→ CustomConfig.xml is distributed to the computer. The settings for application control feature are applied when the user first runs RecMic Configuration Tool. In addition, the device settings are automatically uploaded to the device when the user first connects it to the computer.



To install RecMic Configuration Tool, users must be local administrators on their computers. You can use computer startup scripts to install RecMic Configuration Tool if users do not have administrator privileges.

4.1.1 Create a CustomConfig.xml

To create a CustomConfig.xml

1. Install RecMic Configuration Tool on an administrator's computer.
→ For more information, refer to "[Install RecMic Configuration Tool](#)".
2. On the **Start** menu, click **Olympus RecMic Configuration Tool**.
3. On the **Device configuration** tab and/or the **Application control** tab, change options as needed.
→ For more information, refer to the RecMic Configuration Tool online help.
4. On the **Application** menu, click **Export profile**.
5. Select the configurations you want to export, and then click **OK**.
6. In the **Export Profile** dialog box, select the folder in which to save this file.
7. In the **File name** box, type **CustomConfig.xml**, and then click **Save**.

4.2 Command line installation

The command line installation is useful if you want to install RecMic Configuration Tool across a network to multiple computers. This section describes information on how to use command line options.

4.2.1 Language options

When the installation of RecMic Configuration Tool is started from **setup.exe**, you can select the language that you want to use during installation. This is also used as the default display language of RecMic Configuration Tool.

You can specify the language when you use the command line installation.

Syntax

- To install using setup.exe, use the following syntax:

```
setup.exe /L<Language ID>
```

- To install using msixec, use the following syntax:

```
msiexec /i RecMicConfiguration.msi TRANSFORMS=<path to MST>
```

The table below lists parameters for language options.

Language	Language ID	MST file name
English	1033	1033.mst
Français	1036	1036.mst
Deutsch	1031	1031.mst
Español	1034	1034.mst
Русский	1049	1049.mst
Svenska	1053	1053.mst
Čeština	1029	1029.mst

4.2.2 MSI properties for RecMic Configuration Tool

This topic describes the msixec properties that are available for RecMic Configuration Tool.

Syntax


- To install using setup.exe, use the following syntax:

```
setup.exe /v"<PROPERTY>=<VALUE>"
```

- To install using msixec, use the following syntax:

```
msiexec /i RecMicConfiguration.msi <PROPERTY>=<VALUE>
```


Option	Description
DEST =<installation_folder>	Specifies a full path to the installation folder. By default, RecMic Configuration Tool is installed in: <ul style="list-style-type: none">For 64-bit: C:\Program Files(x86)\OLYMPUS\RecMicConfigurationToolFor 32-bit: C:\Program Files\OLYMPUS\RecMicConfigurationTool
AUTOSTART = {YES NO}	Specifies whether to start RecMic Configuration Tool automatically on Windows logon. The default is YES .
DESKTOPSHORTCUT = {YES NO}	Specifies whether to create a shortcut on the desktop. The default is YES .



Names or paths that include spaces must be enclosed in quotation marks.

4.2.3 Sample command lines

This topic describes sample command lines.
Where **\\Server\Share\RCT** is the path of RecMic Configuration Tool installation package.



If you use the **/qn** option, no dialogs appear during installation. It prevents the installation from waiting for user interactions.

Command lines for setup.exe

- To install RecMic Configuration Tool with default settings:

```
"\\Server\Share\RCT\setup.exe" /s /v"/qn"
```

- To install RecMic Configuration Tool with the language option (the following command specifies the default language to German):

```
"\\Server\Share\RCT\setup.exe" /L1031 /s /v"/qn"
```

- To install RecMic Configuration Tool without the **AUTOSTART** option (default is YES):

```
"\\Server\Share\RCT\setup.exe" /s /v"AUTOSTART=NO /qn"
```

Command lines for msixec

- To install using setup.exe, use the following syntax:

```
msiexec /i "\\Server\Share\RCT\RecMicConfiguration.msi" /qn
```

- To install RecMic Configuration Tool with the language option (the following command specifies the default language to German):

```
msiexec /i "\\Server\Share\RCT\RecMicConfiguration.msi" TRANSFORMS=1031.mst /qn
```

- To install RecMic Configuration Tool without the **AUTOSTART** option (default is YES):

```
msiexec /i "\\Server\Share\RCT\RecMicConfiguration.msi" AUTOSTART=NO /qn
```

5 Support contacts

Inquiries regarding malfunctions

When making an inquiry, please let us know the following items of information and a detailed description of the problem.

- Type of PC (manufacturer and model name)
- Memory capacity
- Hard disk space
- OS and version
- Connected peripheral devices

For malfunctions and other problems, please contact your dealer or distributor.

Other support

Various kinds of information, including product specifications, connection with PCs, OS supporting status, and Q & A, are available on our Web site. For the latest information, visit

<https://www.olympus-global.com/network/>



The information provided may be subject to change without notice.

